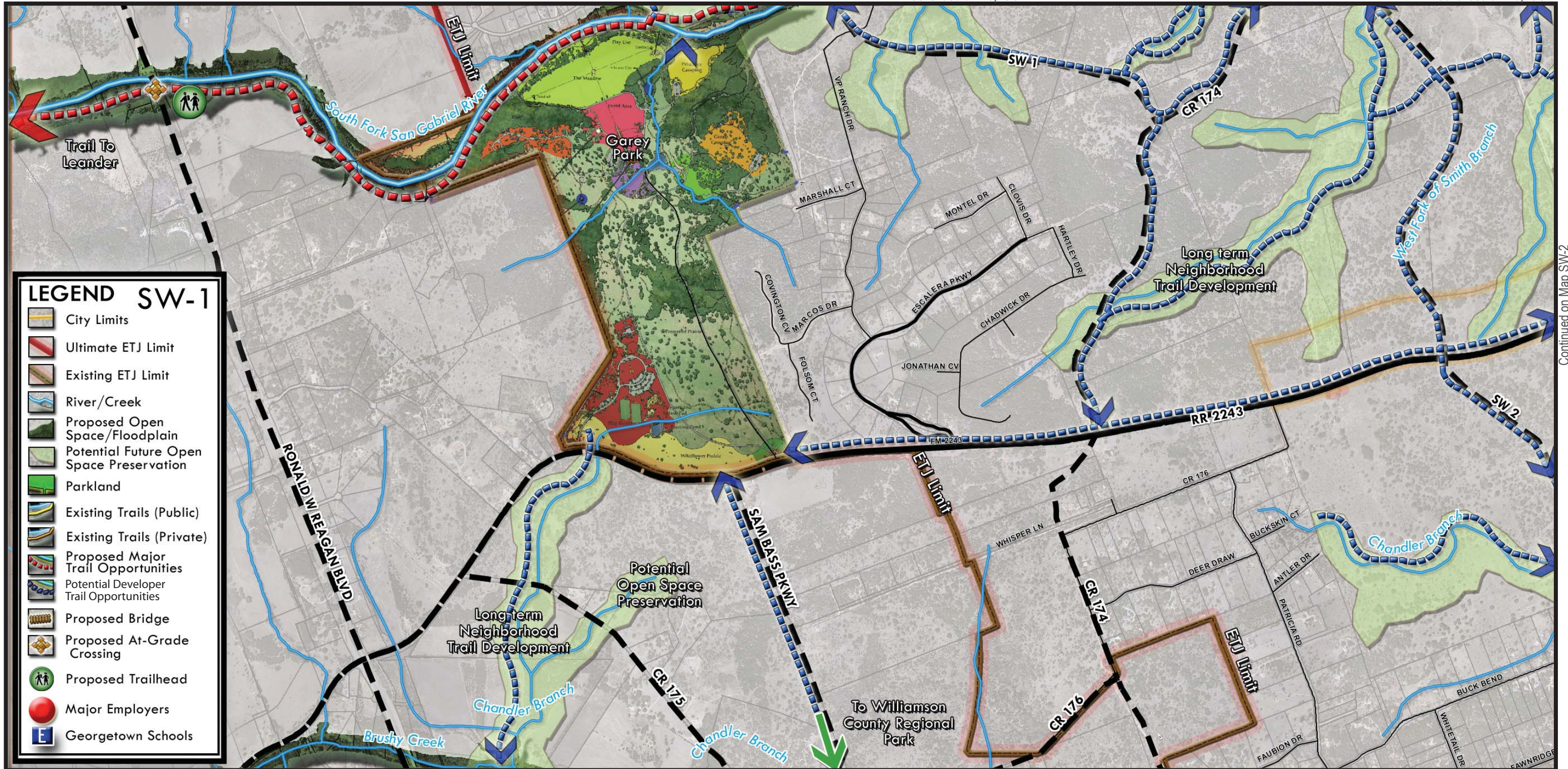


A-PDF Split DEMO : Purchase from www.A-PDF.com to remove the watermark





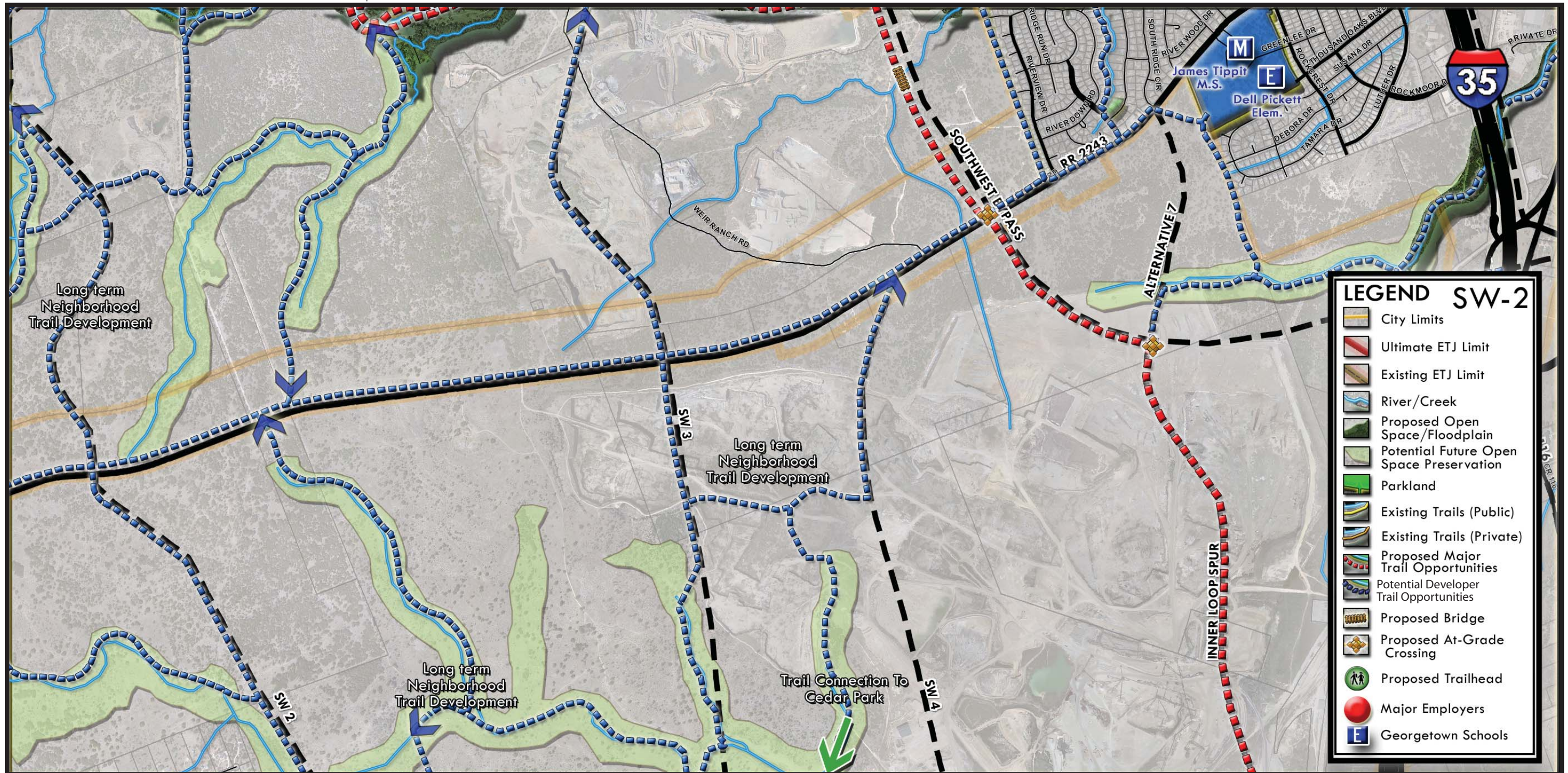
"Trail and greenway alignments are approximate, and are intended to show general geographic locations. Trail alignments are conceptual and demonstrate a future need for citywide and neighborhood area connectivity through potentially preserved open spaces. Precise trail alignments and decisions should be made as more detailed planning, consultation and design occurs."



Continued on Map SG-2

Continued on Map SG-3

Continued on Map SW-1



Continued on Map SE-1



"Trail and greenway alignments are approximate, and are intended to show general geographic locations. Trail alignments are conceptual and demonstrate a future need for citywide and neighborhood area connectivity through potentially preserved open spaces. Precise trail alignments and decisions should be made as more detailed planning, consultation and design occurs."



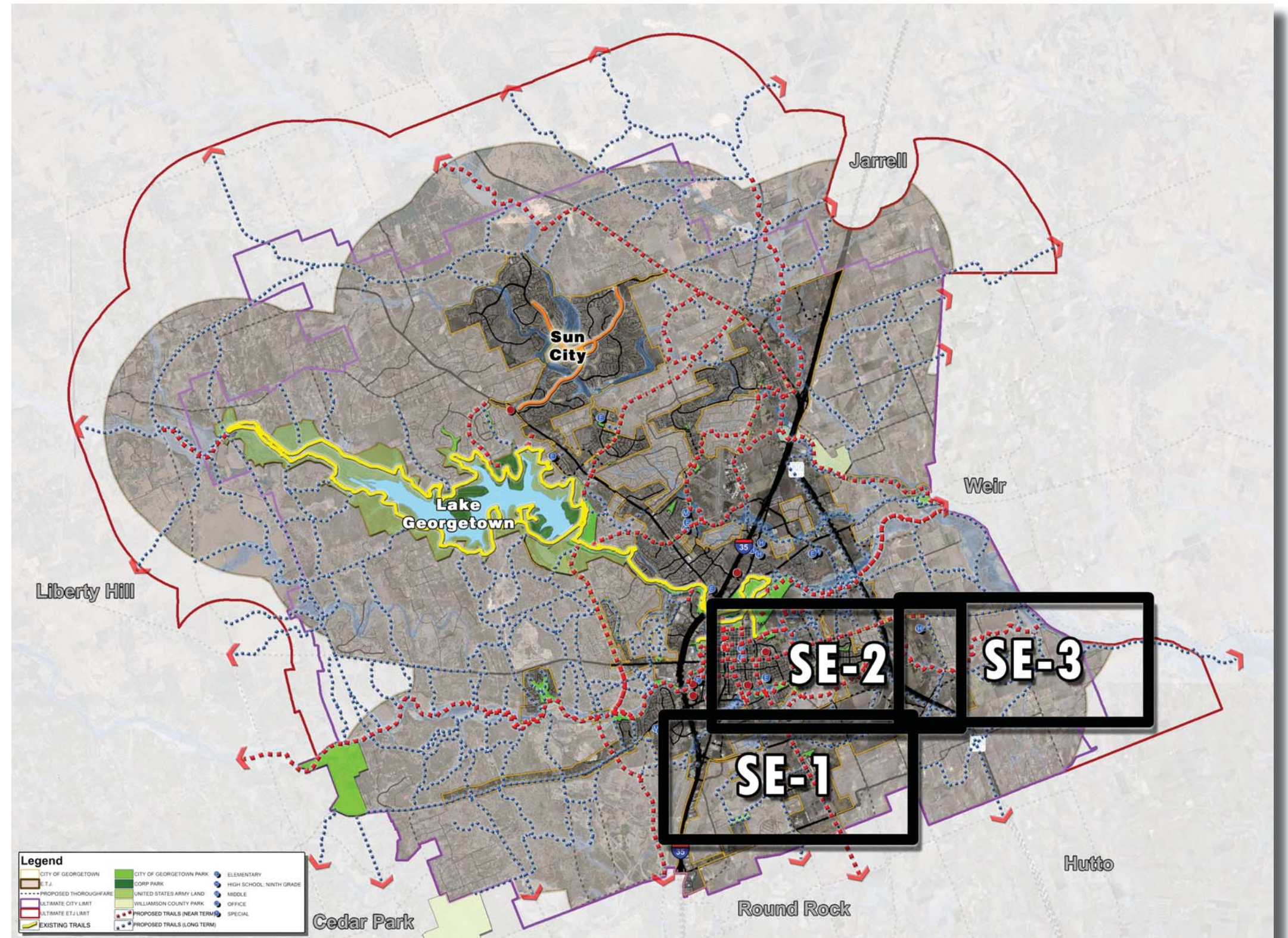
Southeast

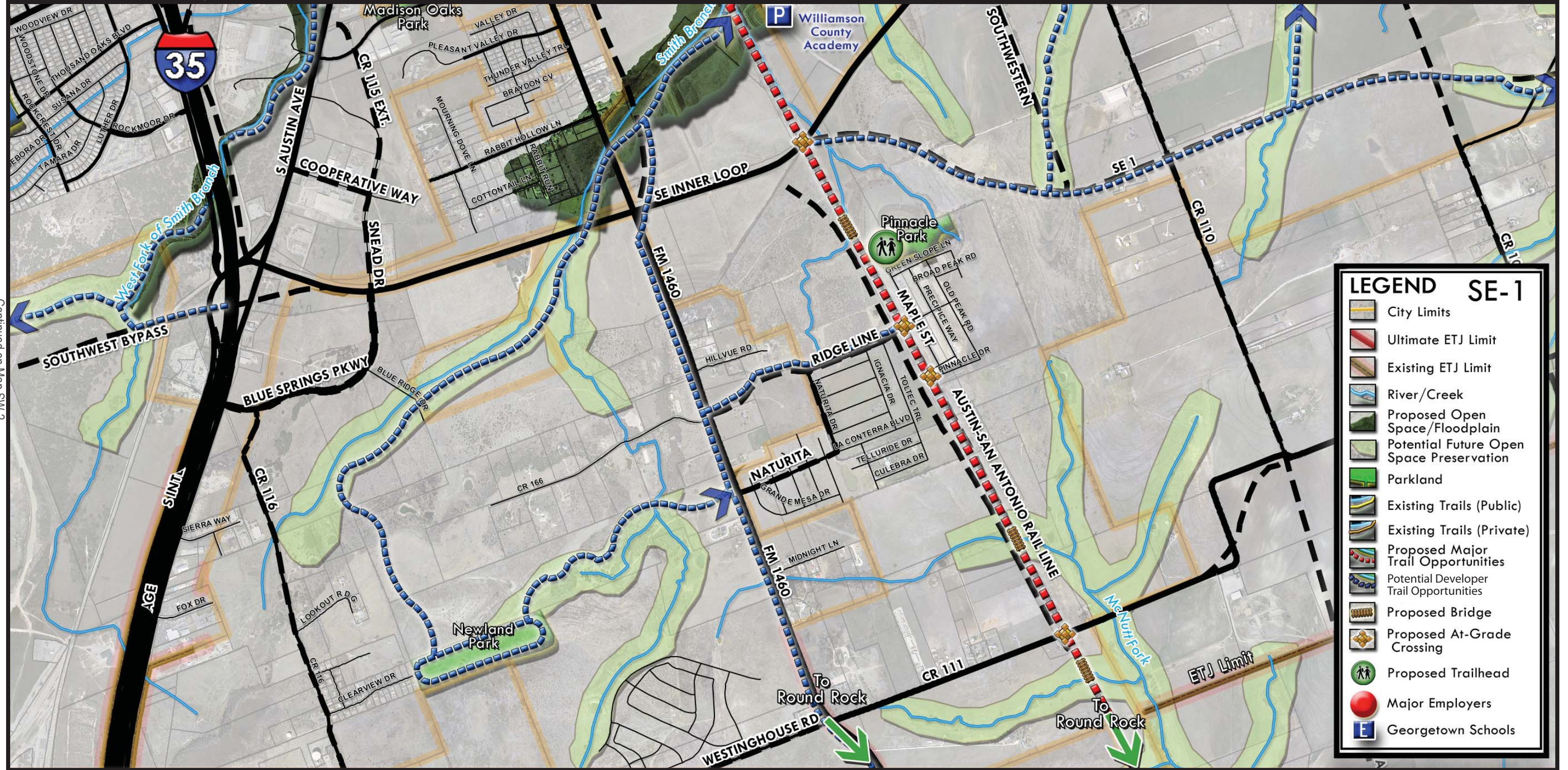
Major trails in this area will connect Georgetown to the university campuses in northern Round Rock. Also, downtown trails are proposed. One other major trail in this area will connect Downtown, Southwestern University and the new Georgetown ISD high school with a major parkway trail along University Ave. It is recommended that this trails master plan work in conjunction with Southwestern University and their future trail planning efforts. Ideally, Georgetown trail corridors will provide connections to the internal trails of the university.

Major crossings include:

- Major crossing at Southeast Inner Loop for the trail connecting to the universities in Round Rock.
- Major crossing at Southeast Inner Loop and University Ave.
- Major crossing at IH 130 and University Ave.







"Trail and greenway alignments are approximate, and are intended to show general geographic locations. Trail alignments are conceptual and demonstrate a future need for citywide and neighborhood area connectivity through potentially preserved open spaces. Precise trail alignments and decisions should be made as more detailed planning, consultation and design occurs."



Continued on Map SG-5



Continued on Map SG-4 & MF-3

Continued on Map SG-3 & MF-3

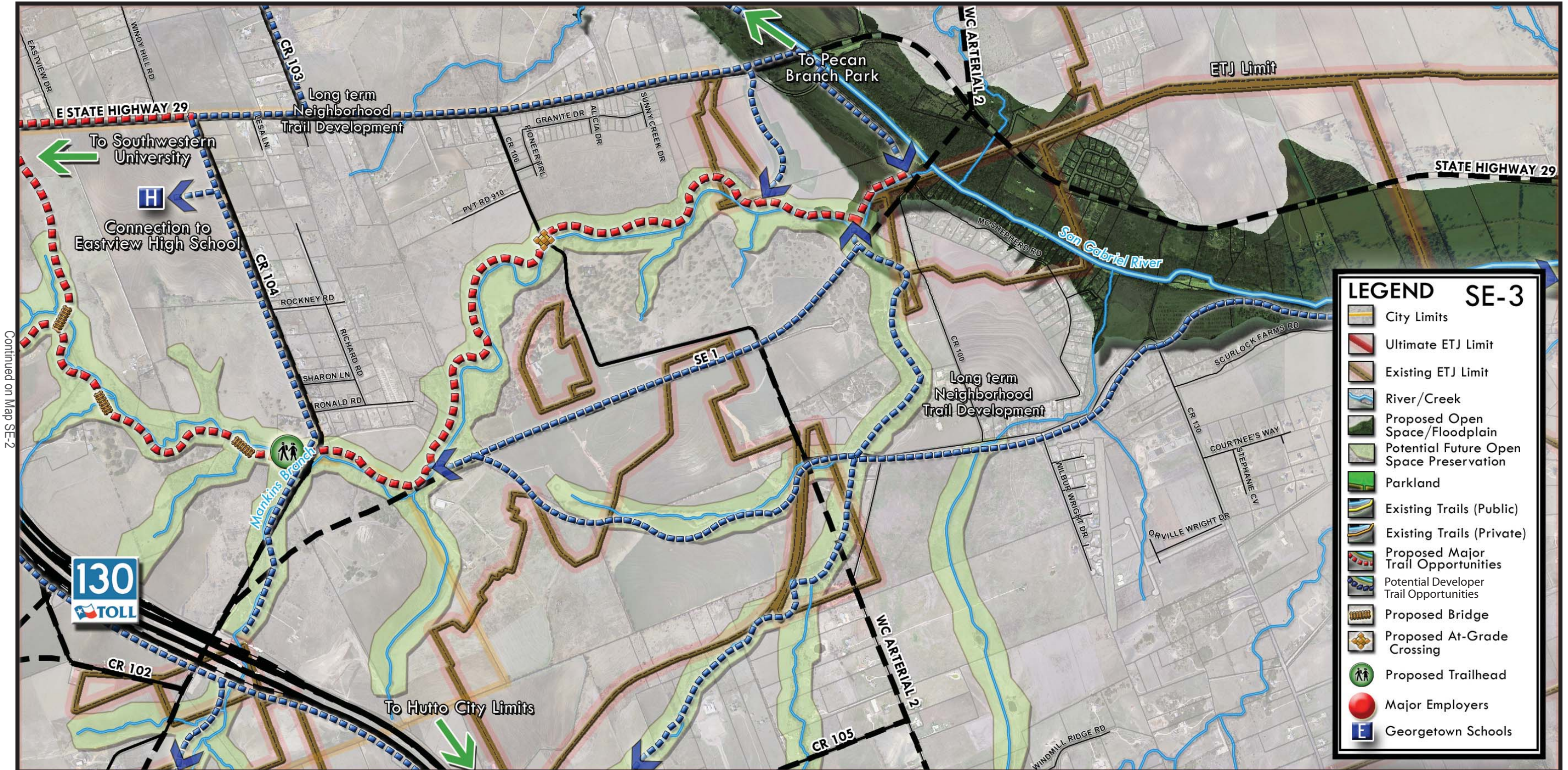
Continued on Map SE-3

Continued on Map SE-1



"Trail and greenway alignments are approximate, and are intended to show general geographic locations. Trail alignments are conceptual and demonstrate a future need for citywide and neighborhood area connectivity through potentially preserved open spaces. Precise trail alignments and decisions should be made as more detailed planning, consultation and design occurs."





Continued on Map SE-2

"Trail and greenway alignments are approximate, and are intended to show general geographic locations. Trail alignments are conceptual and demonstrate a future need for citywide and neighborhood area connectivity through potentially preserved open spaces. Precise trail alignments and decisions should be made as more detailed planning, consultation and design occurs."



This page was intentionally left blank.

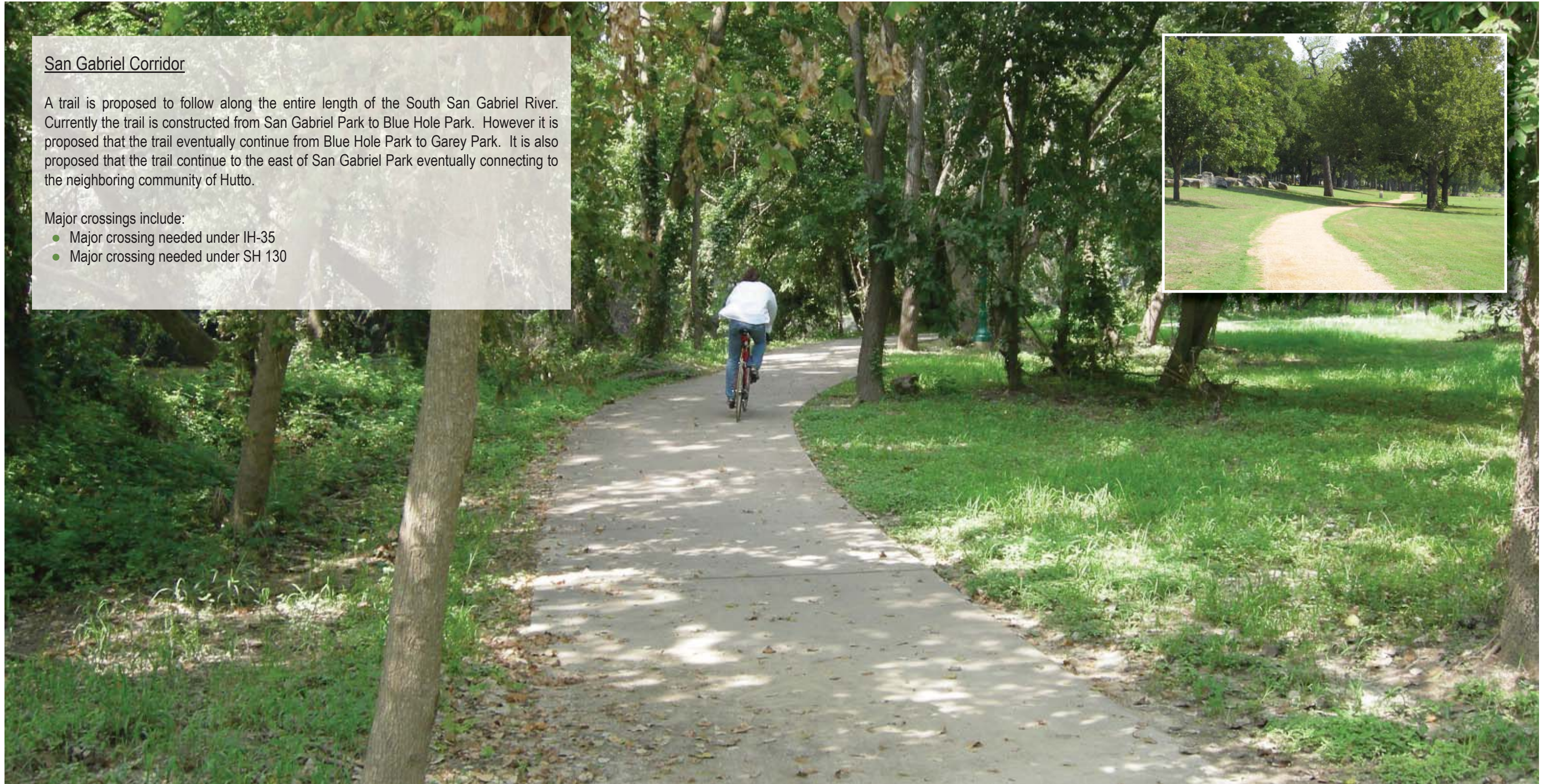


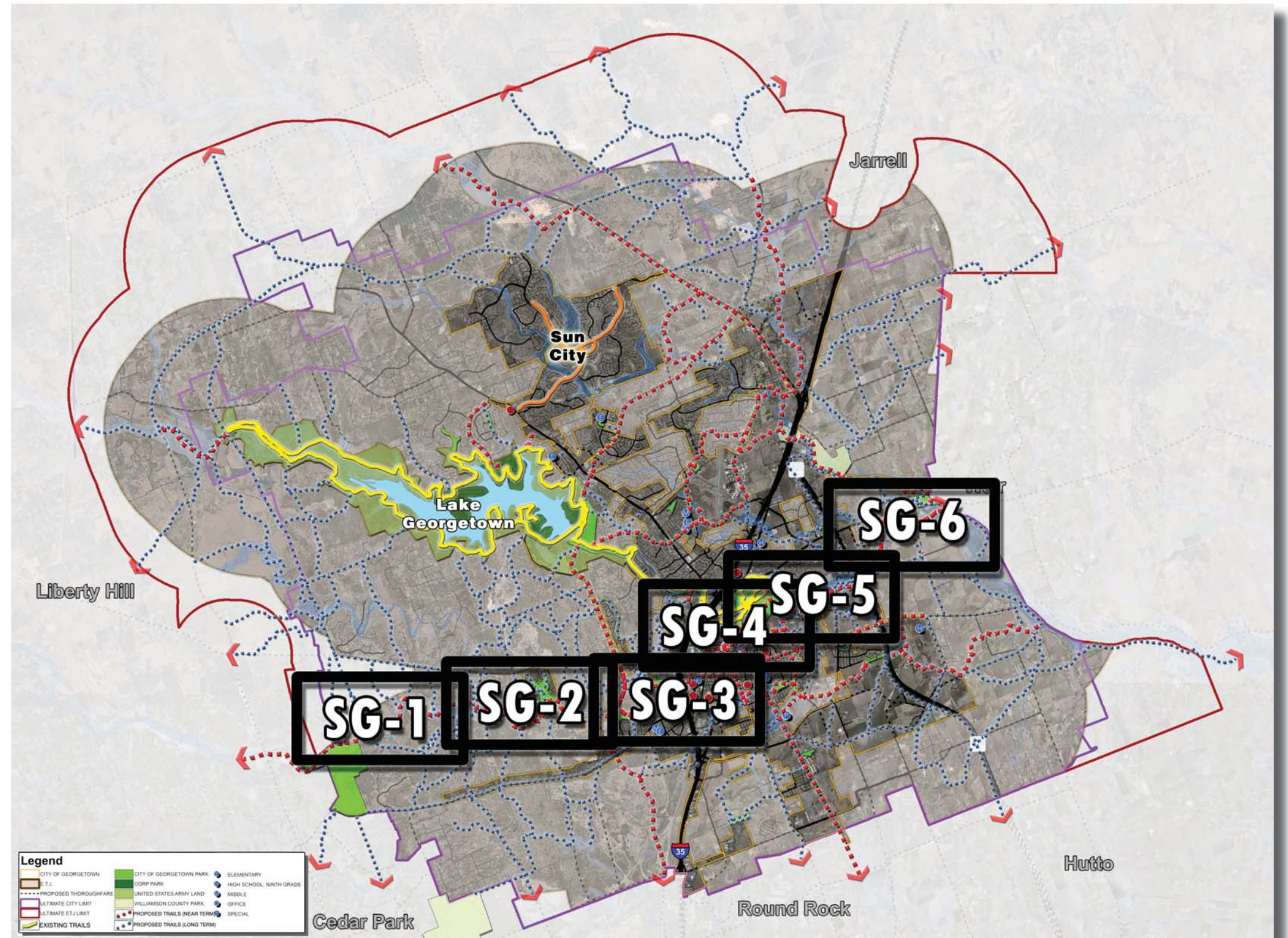
San Gabriel Corridor

A trail is proposed to follow along the entire length of the South San Gabriel River. Currently the trail is constructed from San Gabriel Park to Blue Hole Park. However it is proposed that the trail eventually continue from Blue Hole Park to Garey Park. It is also proposed that the trail continue to the east of San Gabriel Park eventually connecting to the neighboring community of Hutto.

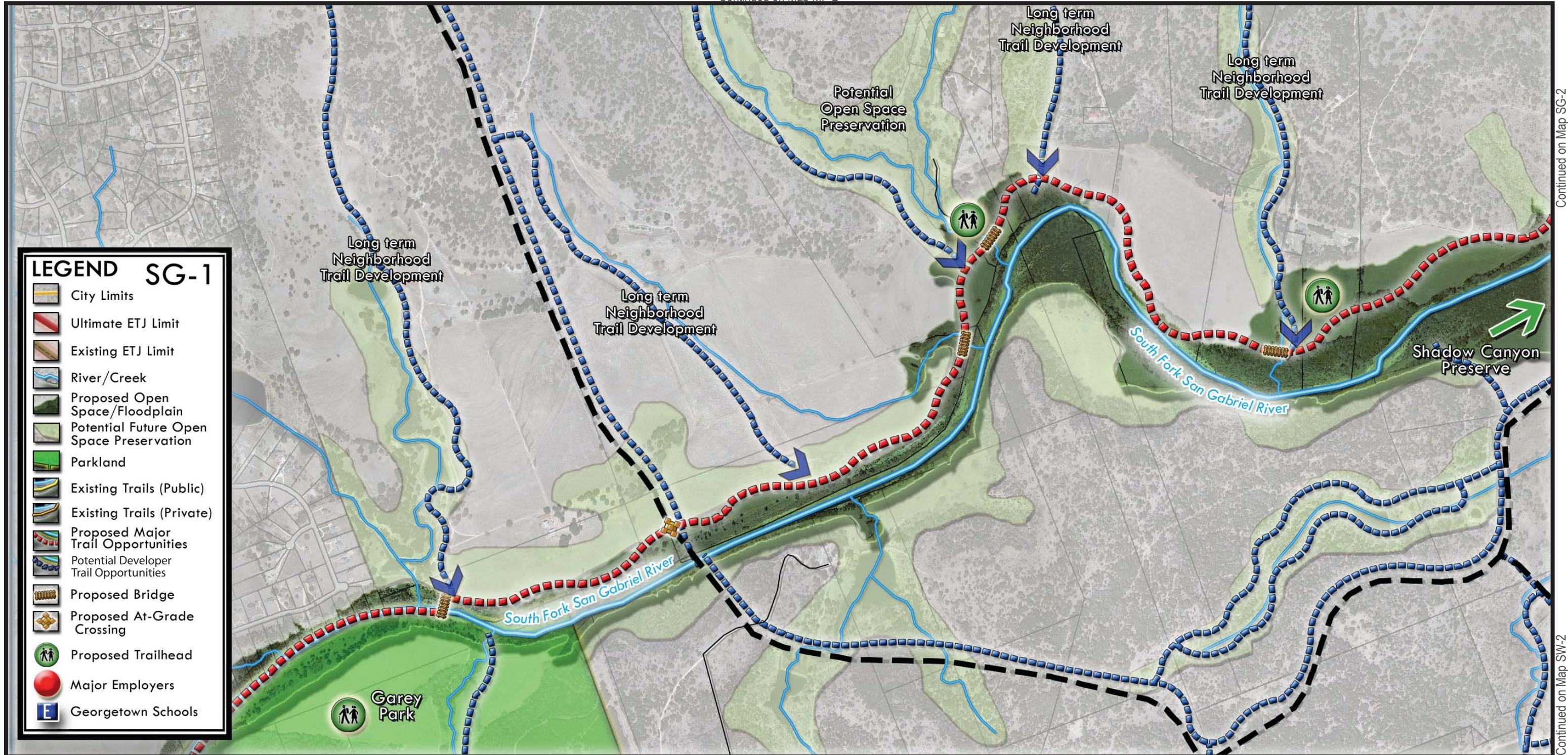
Major crossings include:

- Major crossing needed under IH-35
- Major crossing needed under SH 130





Continued on Map MF-2



Continued on Map SG-2

Continued on Map SW-2

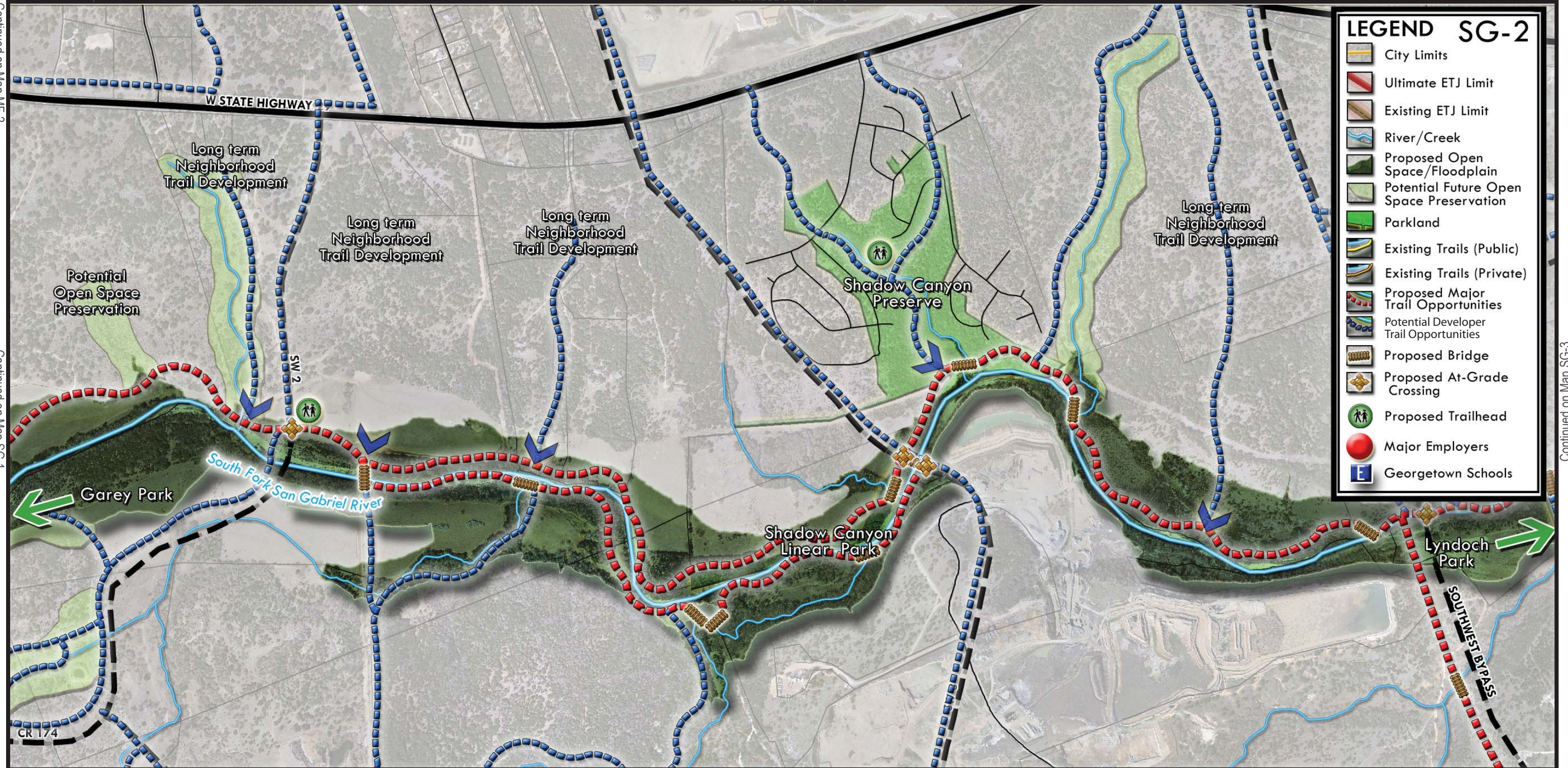
Continued on Map SW-1

“Trail and greenway alignments are approximate, and are intended to show general geographic locations. Trail alignments are conceptual and demonstrate a future need for citywide and neighborhood area connectivity through potentially preserved open spaces. Precise trail alignments and decisions should be made as more detailed planning, consultation and design occurs.”



Continued on Map MF-2

Continued on Map MF-3



LEGEND SG-2

- City Limits
- Ultimate ETJ Limit
- Existing ETJ Limit
- River/Creek
- Proposed Open Space/Floodplain
- Potential Future Open Space Preservation
- Parkland
- Existing Trails (Public)
- Existing Trails (Private)
- Proposed Major Trail Opportunities
- Potential Developer Trail Opportunities
- Proposed Bridge
- Proposed At-Grade Crossing
- Proposed Trailhead
- Major Employers
- Georgetown Schools

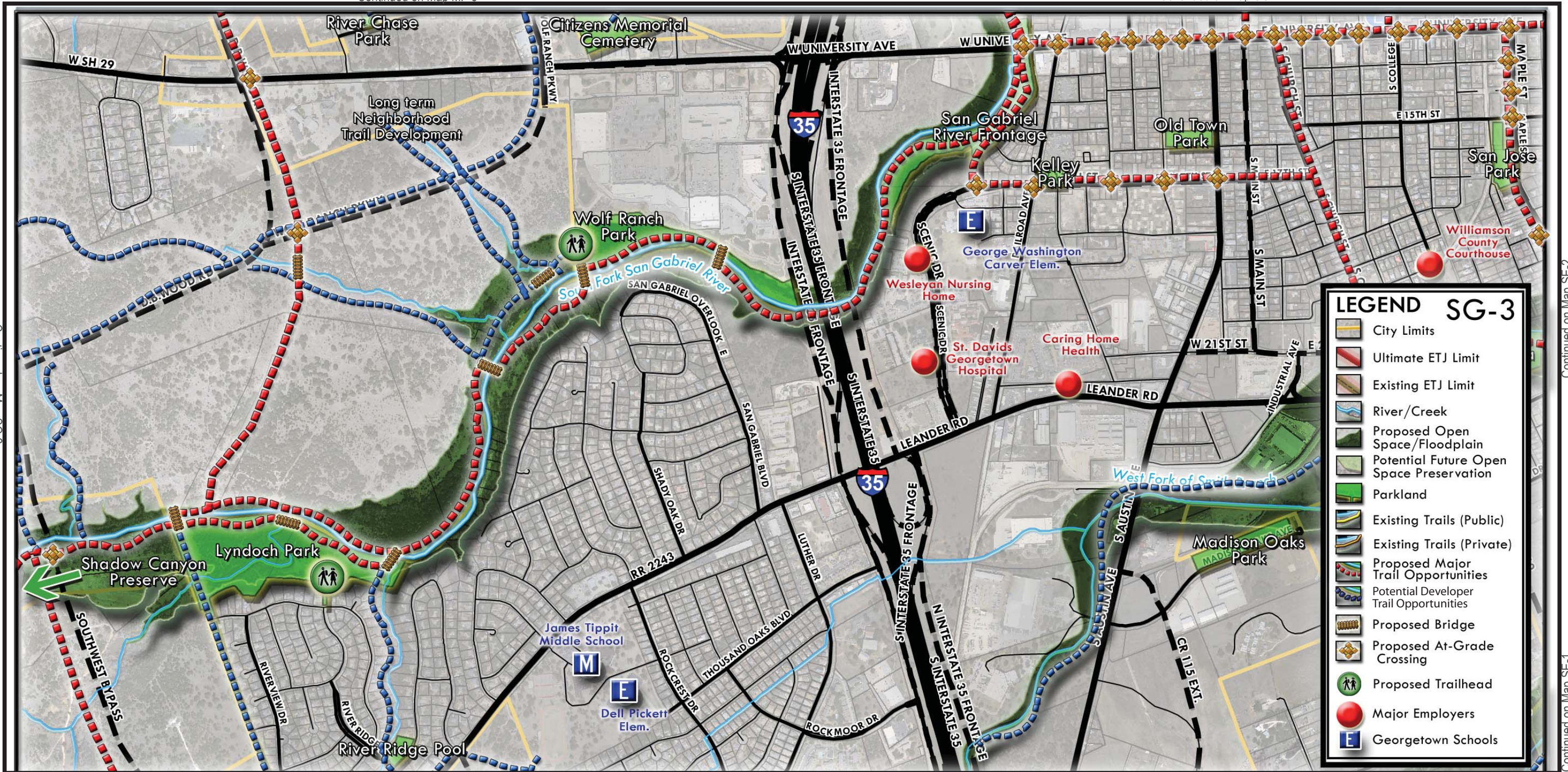
Continued on Map SW-1

Continued on Map SW-2



"Trail and greenway alignments are approximate, and are intended to show general geographic locations. Trail alignments are conceptual and demonstrate a future need for citywide and neighborhood area connectivity through potentially preserved open spaces. Precise trail alignments and decisions should be made as more detailed planning, consultation and design occurs."





Continued on Map SG-2

Continued on Map SE-2

Continued on Map SE-2

Continued on Map SE-1

"Trail and greenway alignments are approximate, and are intended to show general geographic locations. Trail alignments are conceptual and demonstrate a future need for citywide and neighborhood area connectivity through potentially preserved open spaces. Precise trail alignments and decisions should be made as more detailed planning, consultation and design occurs."



Continued on Map NF-3

Continued on Map SG-5

Continued on Map MF-3

Continued on Map SG-5

Continued on Map SE-2



Continued on Map SG-3

Continued on Map SE-2



“Trail and greenway alignments are approximate, and are intended to show general geographic locations. Trail alignments are conceptual and demonstrate a future need for citywide and neighborhood area connectivity through potentially preserved open spaces. Precise trail alignments and decisions should be made as more detailed planning, consultation and design occurs.”

