

LEGEND NW-1

- City Limits
- Ultimate ETJ Limit
- Existing ETJ Limit
- River/Creek
- Proposed Open Space/Floodplain
- Potential Future Open Space Preservation
- Parkland
- Existing Trails (Public)
- Existing Trails (Private)
- Proposed Major Trail Opportunities
- Potential Developer Trail Opportunities
- Proposed Bridge
- Proposed At-Grade Crossing
- Proposed Trailhead
- Major Employers
- Georgetown Schools

Continued on Map NF-1

APDF Split Demo. To purchase from www.APDF.com to remove the watermark. Continued on Map NW-2 & BC-2

Continued on Map NF-1 & NF-2

Continued on Map NF-2

Continued on Map NW-2 & NF-2

“Trail and greenway alignments are approximate, and are intended to show general geographic locations. Trail alignments are conceptual and demonstrate a future need for citywide and neighborhood area connectivity through potentially preserved open spaces. Precise trail alignments and decisions should be made as more detailed planning, consultation and design occurs.”

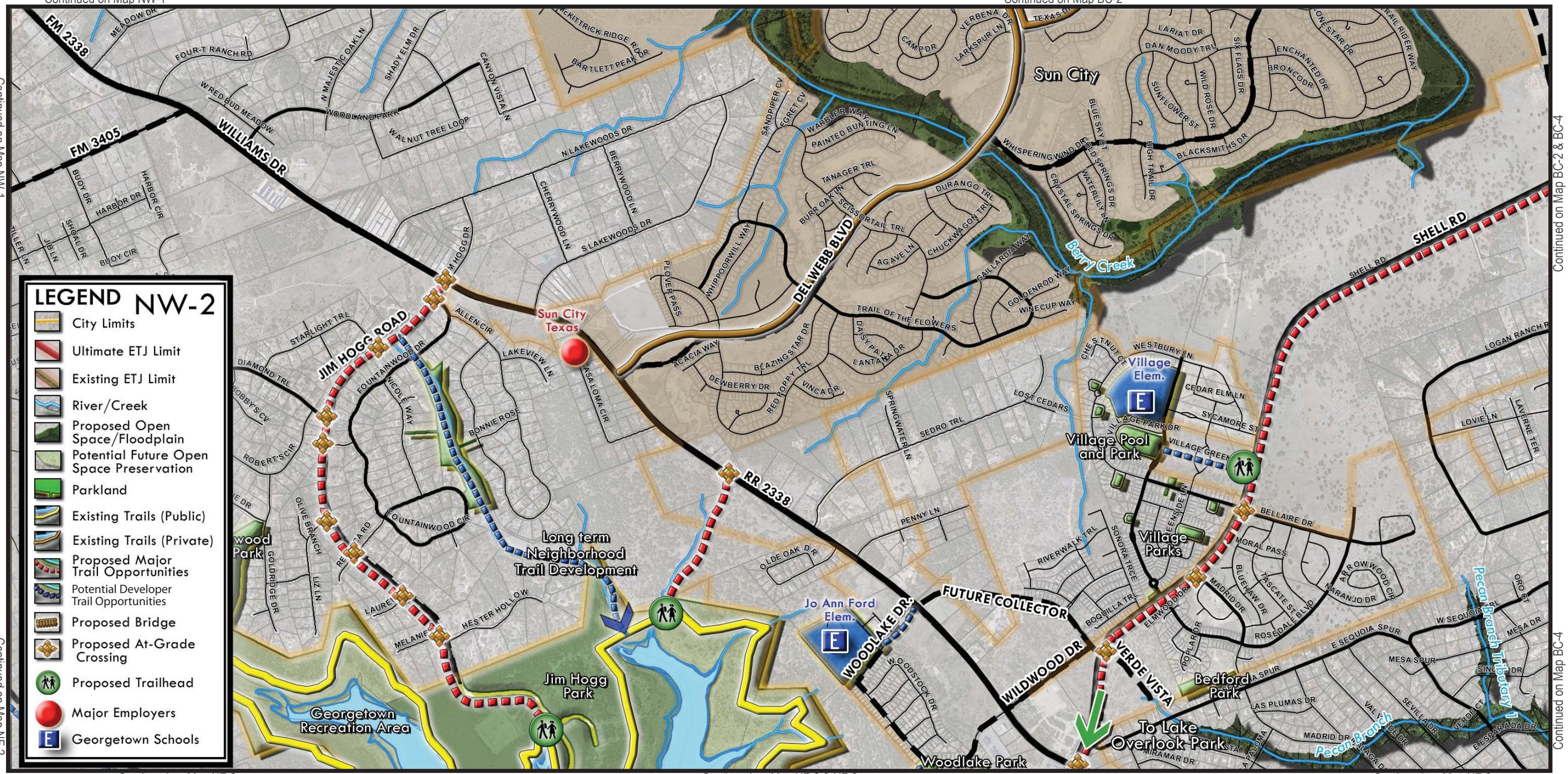


Continued on Map NW-1

Continued on Map BC-2

Continued on Map NW-1

Continued on Map BC-2 & BC-4



Continued on Map NF-2

Continued on Map NF-2

Continued on Map NF-2 & NF-3

Continued on Map NF-3

Continued on Map BC-4



"Trail and greenway alignments are approximate, and are intended to show general geographic locations. Trail alignments are conceptual and demonstrate a future need for citywide and neighborhood area connectivity through potentially preserved open spaces. Precise trail alignments and decisions should be made as more detailed planning, consultation and design occurs."



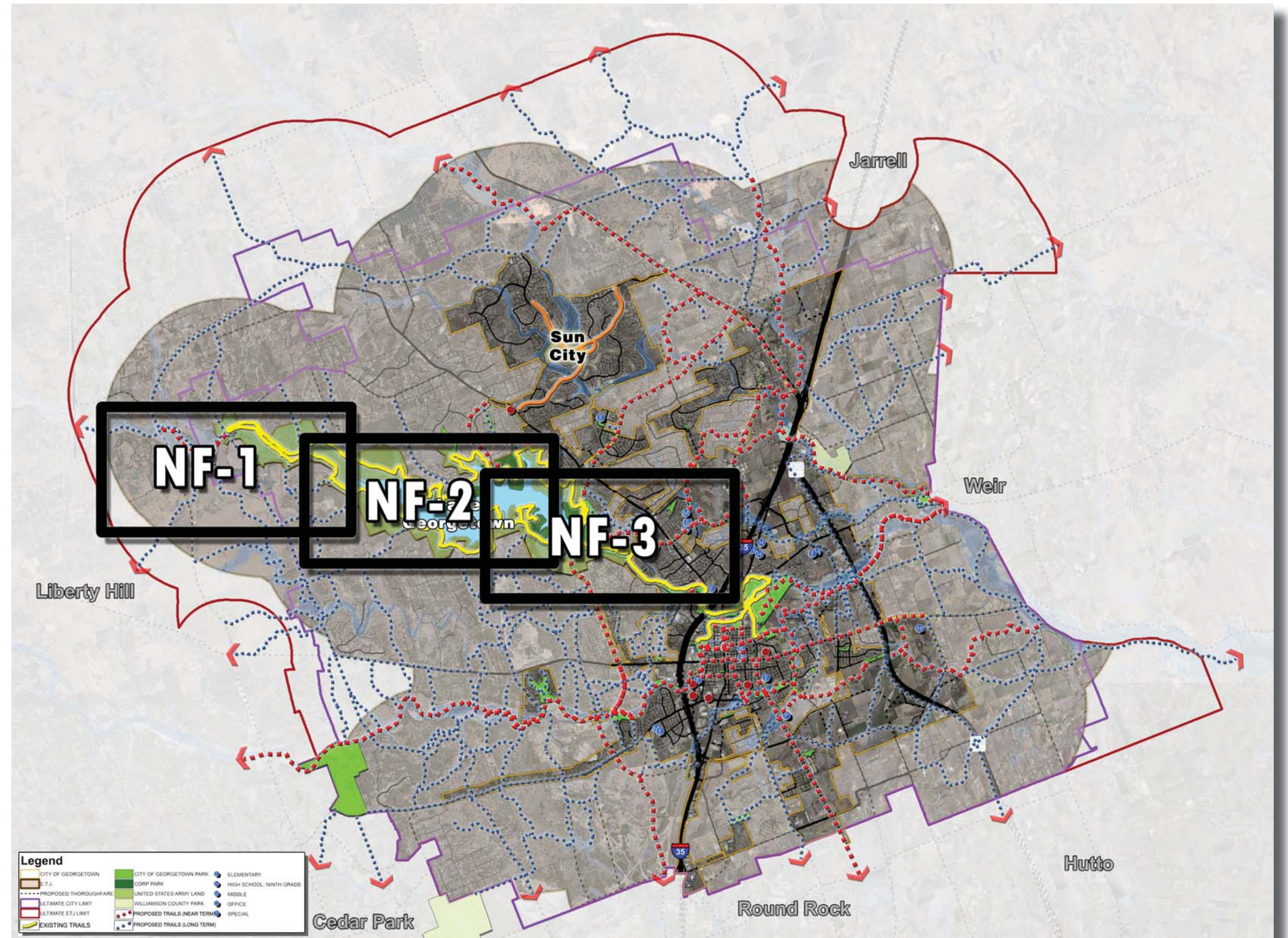
North Fork Corridor

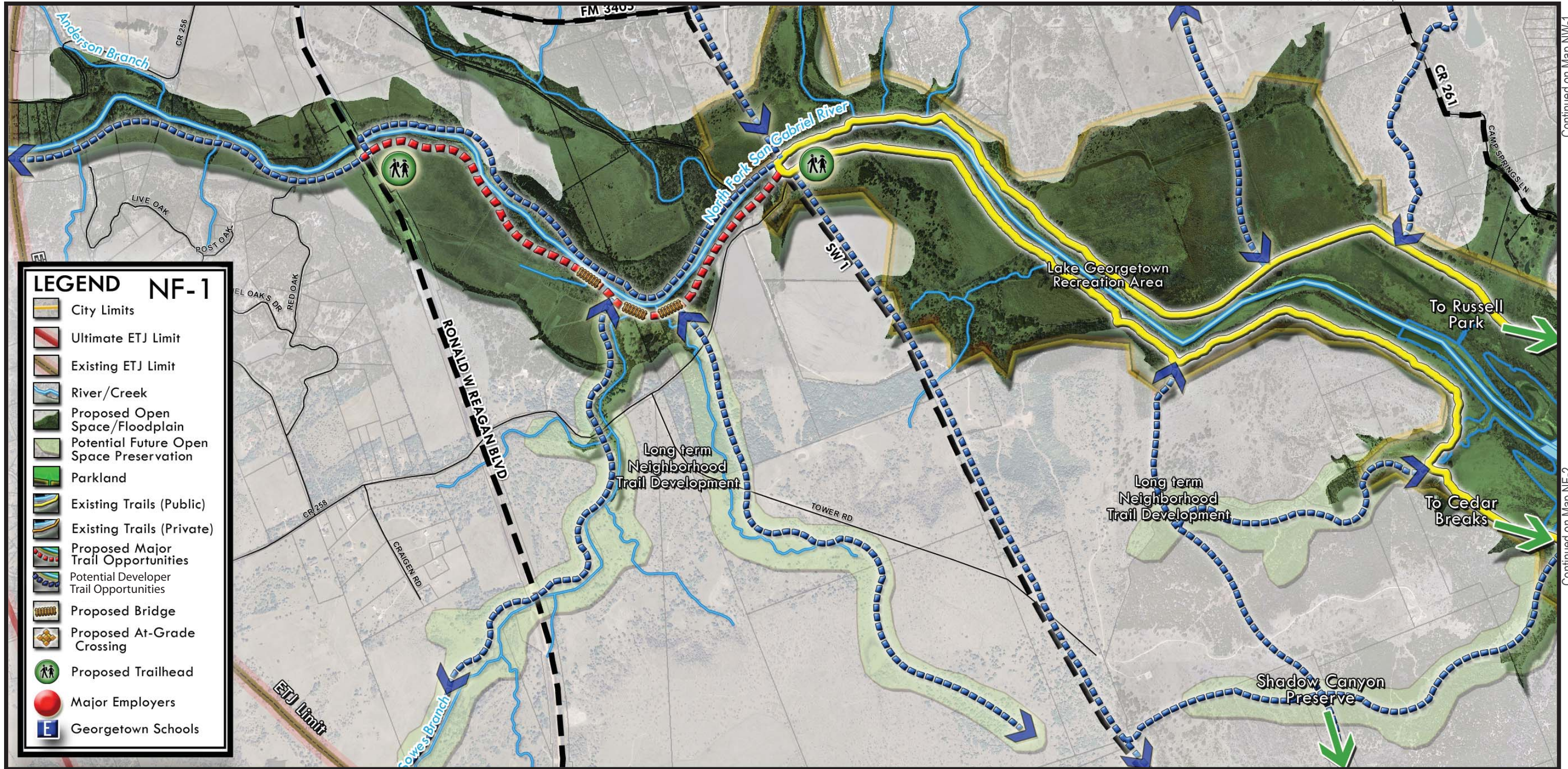
It is proposed that a trail extend along the north fork of the San Gabriel River to provide connections between Georgetown and the surround communities of Leander and Liberty Hill. Also, connections between Williams Dr. Pool and Park can be made to Lake Georgetown.

Major crossings include:

- A major crossing will be needed at Williams Dr. to connect Williams Dr. Pool and Park to Lake Georgetown.







Continued on Map MF-1

Continued on Map MF-1 & NF-2

"Trail and greenway alignments are approximate, and are intended to show general geographic locations. Trail alignments are conceptual and demonstrate a future need for citywide and neighborhood area connectivity through potentially preserved open spaces. Precise trail alignments and decisions should be made as more detailed planning, consultation and design occurs."



Continued on Map NF-1 & NW-1

Continued on Map NW-1

Continued on Map NW-2

Continued on Map NF-1

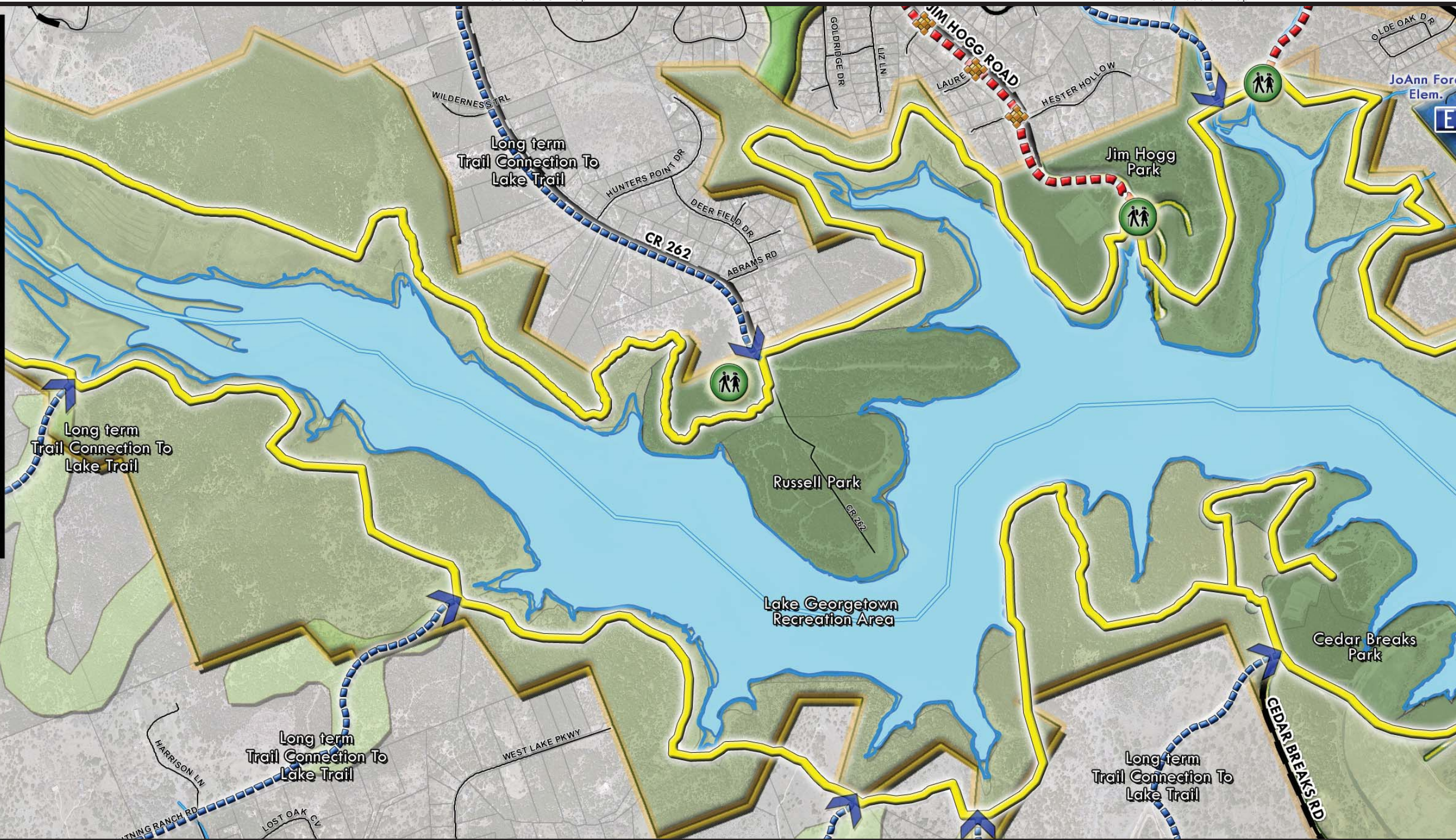
Continued on Map NW-2

Continued on Map NF-3

Continued on Map MF-1

LEGEND NF-2

- City Limits
- Ultimate ETJ Limit
- Existing ETJ Limit
- River/Creek
- Proposed Open Space/Floodplain
- Potential Future Open Space Preservation
- Parkland
- Existing Trails (Public)
- Existing Trails (Private)
- Proposed Major Trail Opportunities
- Potential Developer Trail Opportunities
- Proposed Bridge
- Proposed At-Grade Crossing
- Proposed Trailhead
- Major Employers
- Georgetown Schools



Continued on Map MF-1 & MF-2

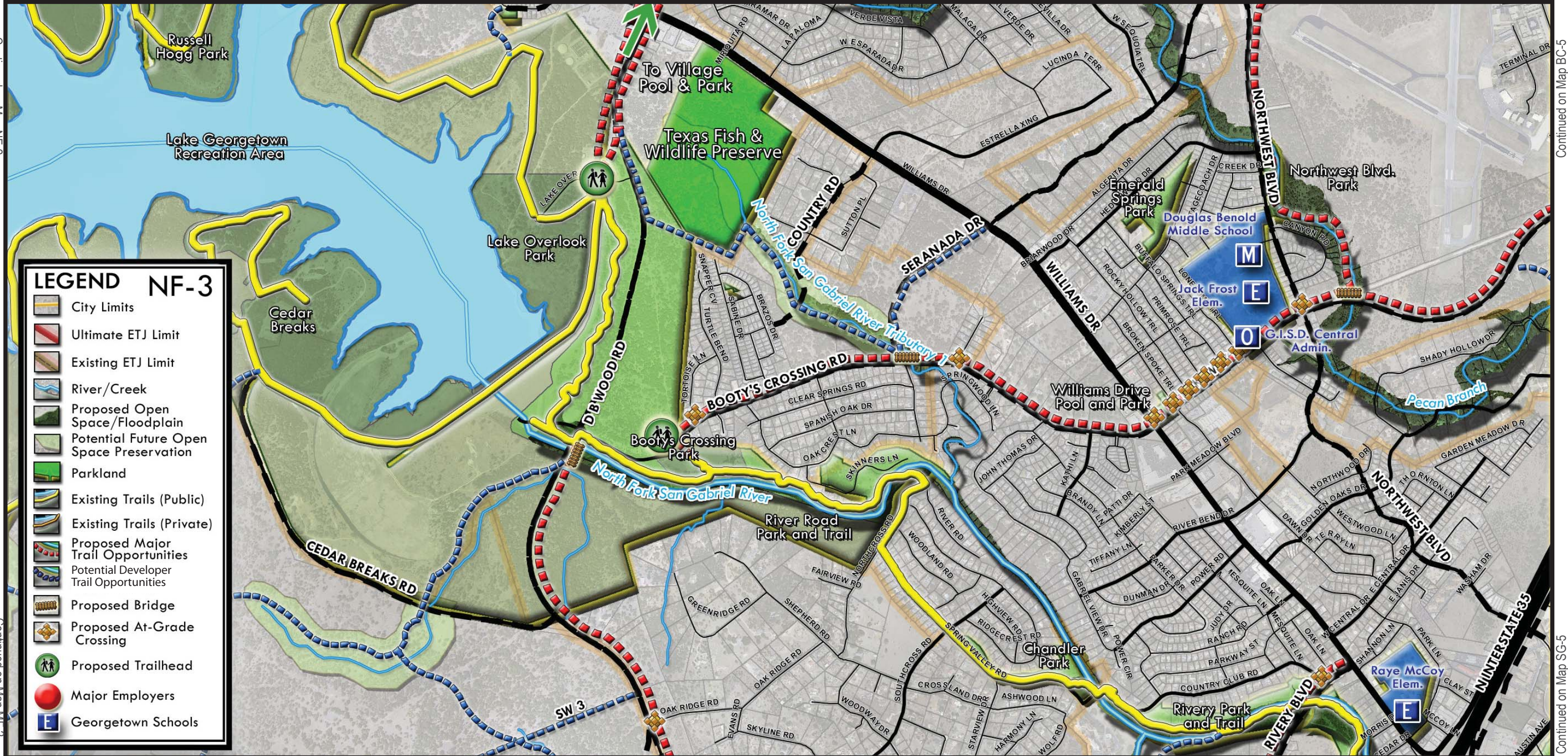
Continued on Map MF-2

Continued on Map NF-3



"Trail and greenway alignments are approximate, and are intended to show general geographic locations. Trail alignments are conceptual and demonstrate a future need for citywide and neighborhood area connectivity through potentially preserved open spaces. Precise trail alignments and decisions should be made as more detailed planning, consultation and design occurs."





Continued on Map MF-3

Continued on Map MF-3 & SG-4

“Trail and greenway alignments are approximate, and are intended to show general geographic locations. Trail alignments are conceptual and demonstrate a future need for citywide and neighborhood area connectivity through potentially preserved open spaces. Precise trail alignments and decisions should be made as more detailed planning, consultation and design occurs.”



This page was intentionally left blank.

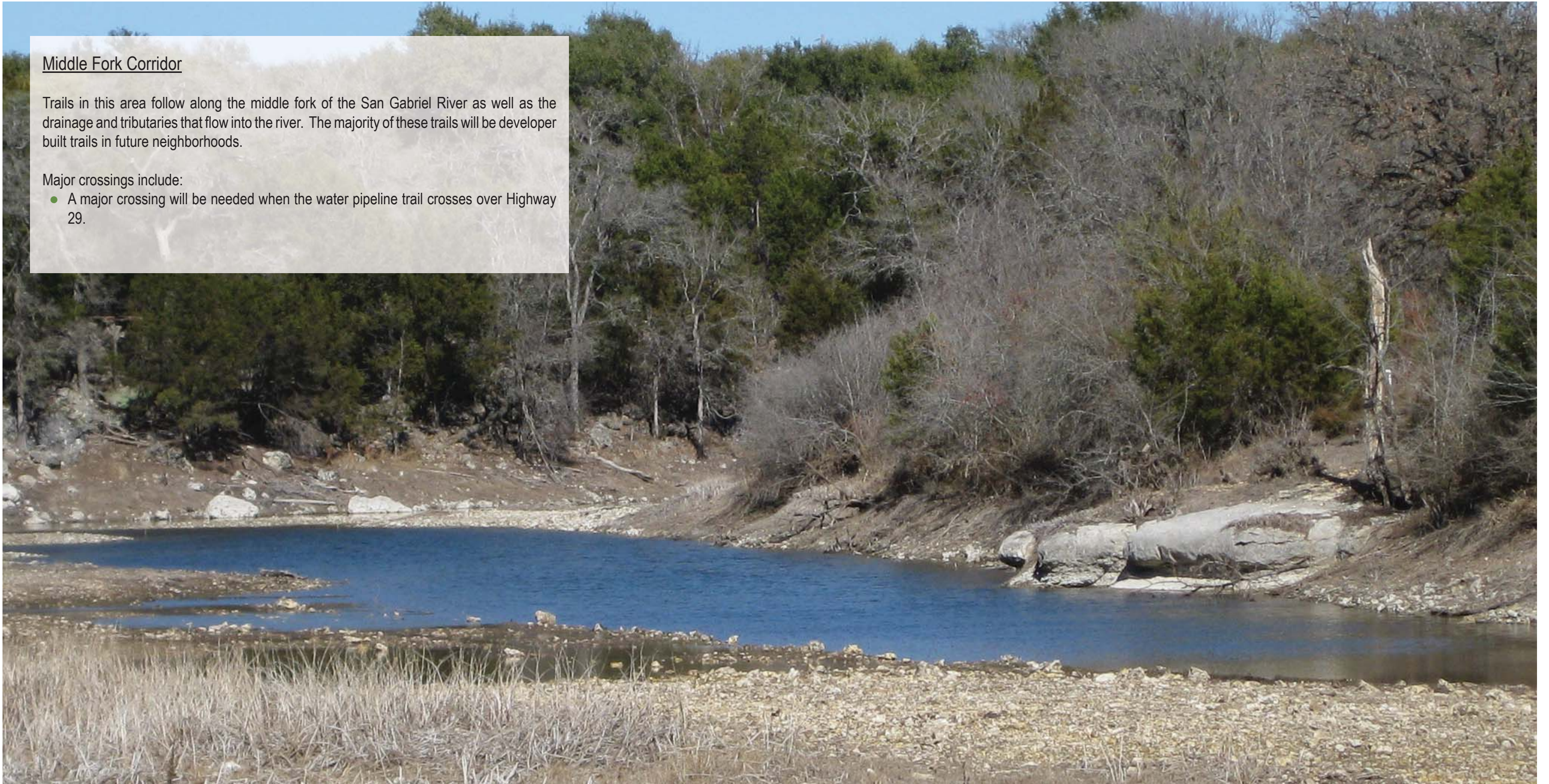


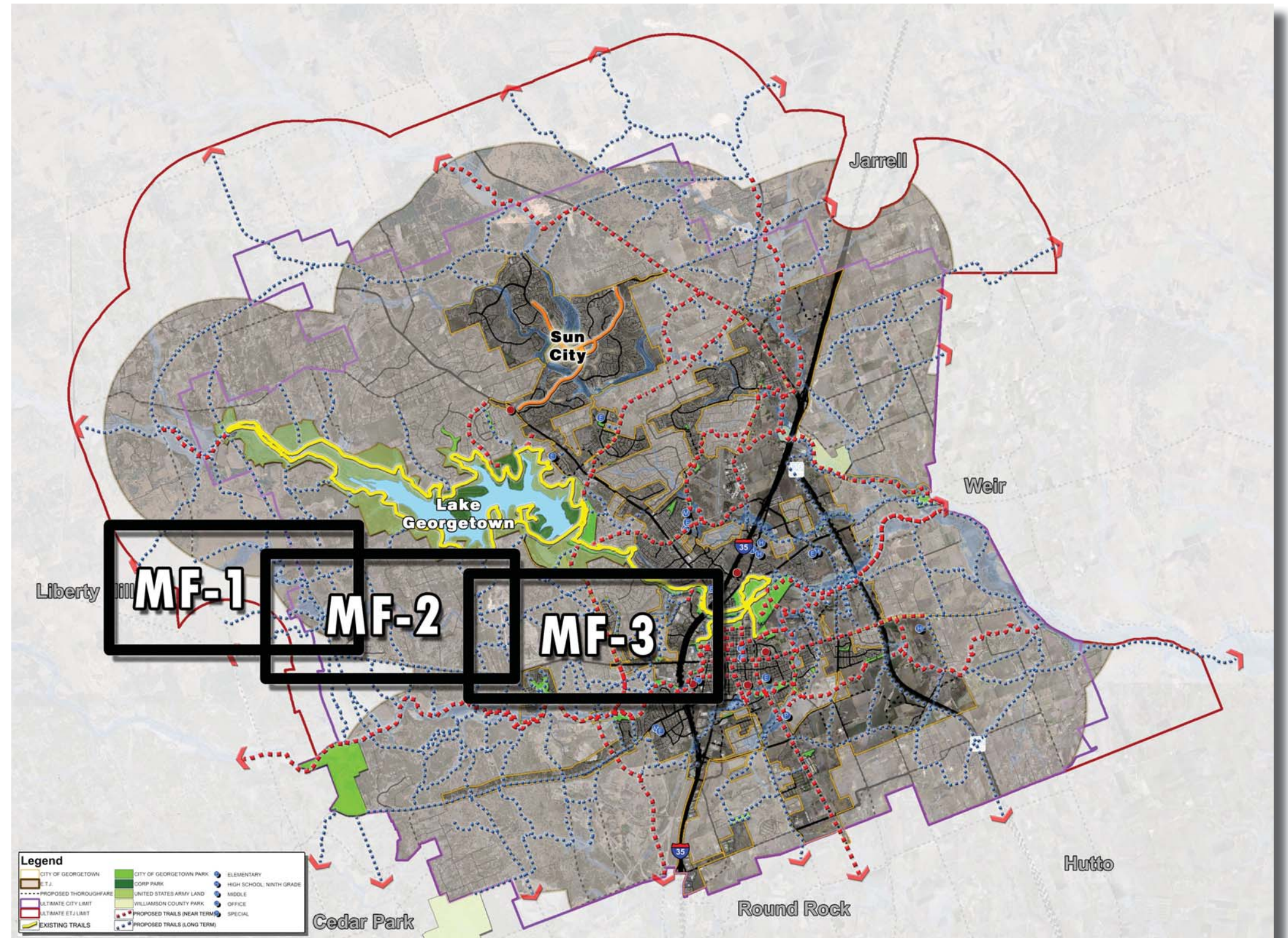
Middle Fork Corridor

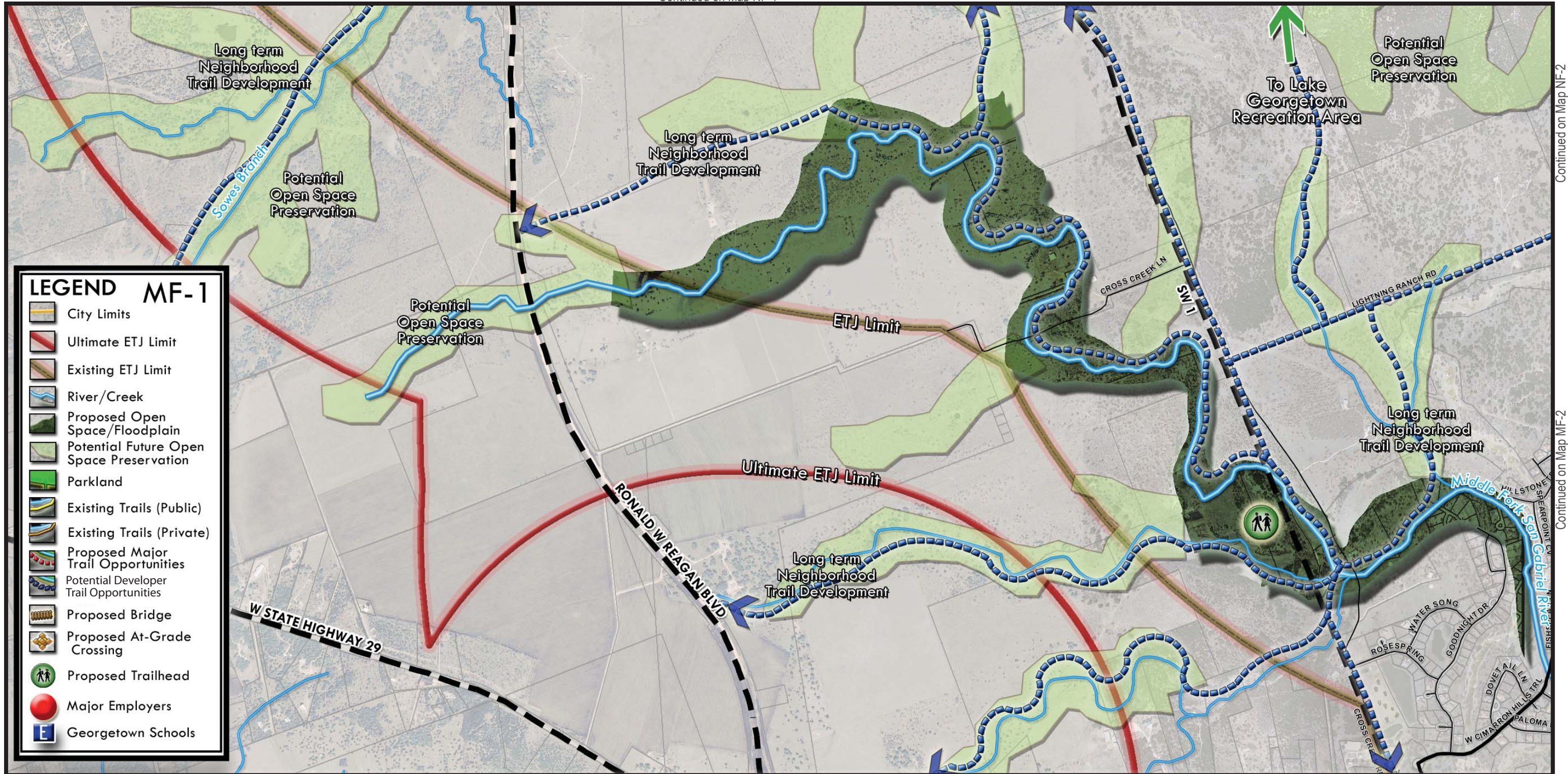
Trails in this area follow along the middle fork of the San Gabriel River as well as the drainage and tributaries that flow into the river. The majority of these trails will be developer built trails in future neighborhoods.

Major crossings include:

- A major crossing will be needed when the water pipeline trail crosses over Highway 29.







Continued on Map NF-2

Continued on Map MF-2

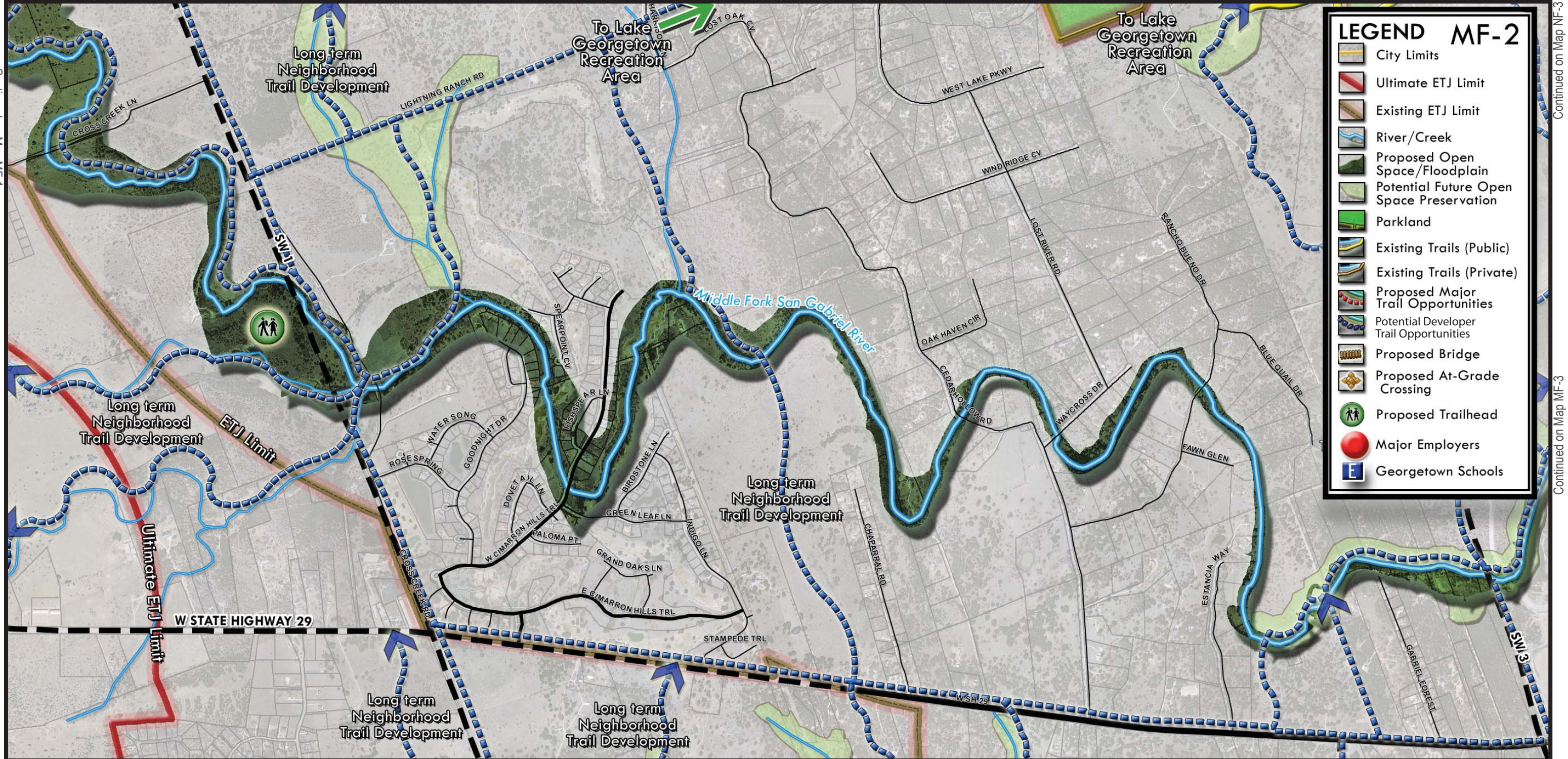
Continued on Map MF-2

"Trail and greenway alignments are approximate, and are intended to show general geographic locations. Trail alignments are conceptual and demonstrate a future need for citywide and neighborhood area connectivity through potentially preserved open spaces. Precise trail alignments and decisions should be made as more detailed planning, consultation and design occurs."



Continued on Map MF-1

Continued on Map NF-2



Continued on Map MF-1

Continued on Map NF-3

Continued on Map MF-3

LEGEND MF-2

- City Limits
- Ultimate ETJ Limit
- Existing ETJ Limit
- River/Creek
- Proposed Open Space/Floodplain
- Potential Future Open Space Preservation
- Parkland
- Existing Trails (Public)
- Existing Trails (Private)
- Proposed Major Trail Opportunities
- Potential Developer Trail Opportunities
- Proposed Bridge
- Proposed At-Grade Crossing
- Proposed Trailhead
- Major Employers
- Georgetown Schools



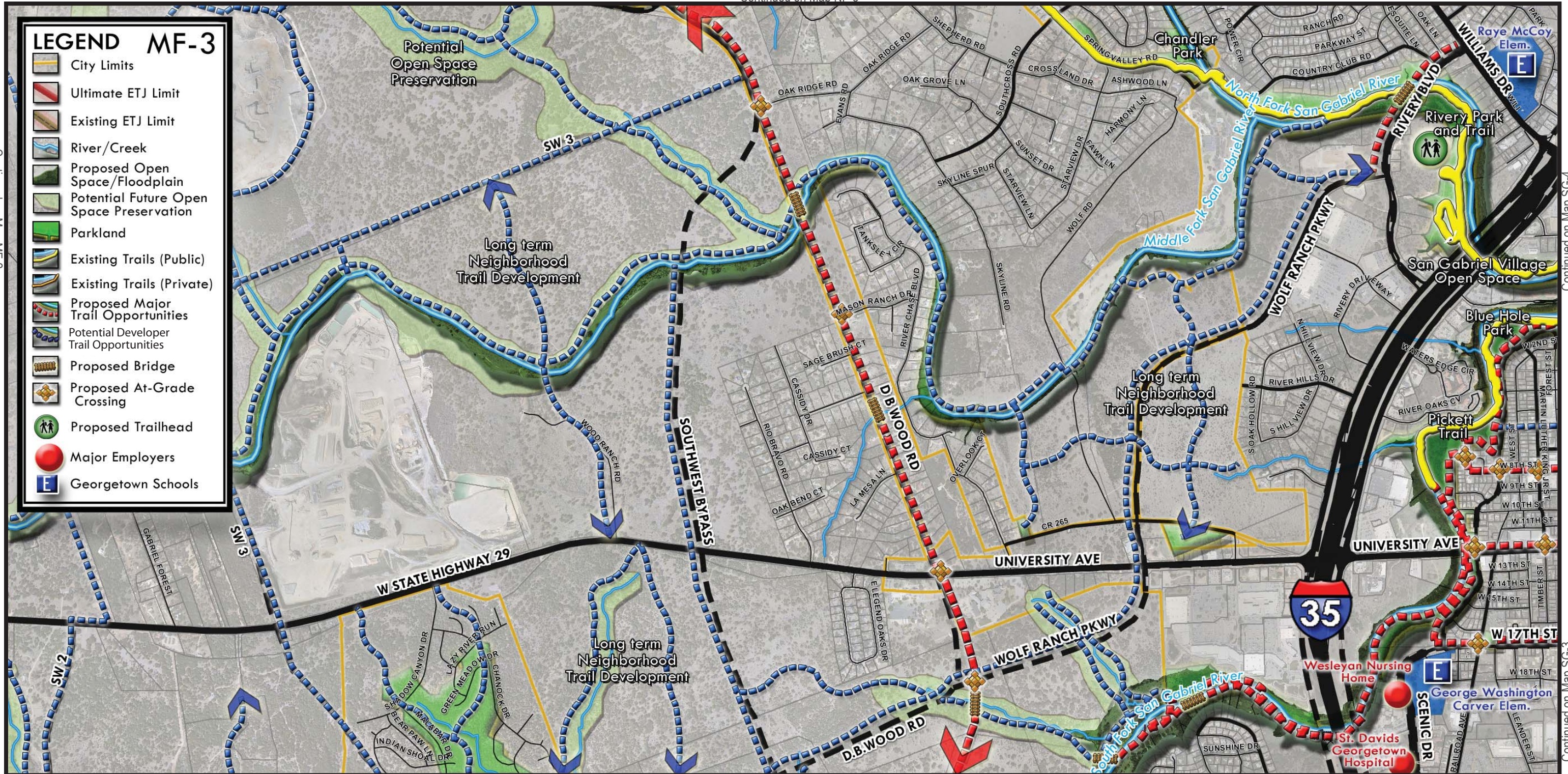
"Trail and greenway alignments are approximate, and are intended to show general geographic locations. Trail alignments are conceptual and demonstrate a future need for citywide and neighborhood area connectivity through potentially preserved open spaces. Precise trail alignments and decisions should be made as more detailed planning, consultation and design occurs."

Continued on Map SG-1

Continued on Map SG-2



Continued on Map MF-2



Continued on Map SG-4

Continued on Map SG-3

Continued on Map SG-2

Continued on Map SG-3

"Trail and greenway alignments are approximate, and are intended to show general geographic locations. Trail alignments are conceptual and demonstrate a future need for citywide and neighborhood area connectivity through potentially preserved open spaces. Precise trail alignments and decisions should be made as more detailed planning, consultation and design occurs."



This page was intentionally left blank.



Southwest

Trails in this area will connect Garey Park to the Williamson County Regional Park. Also the water pipeline trail will connect from Lake Georgetown to Brushy Creek in Round Rock. Trails in this area will be regional trails, connecting Georgetown to the surround communities.

Major crossings include:

- Major crossing are needed over RR 2243, one at the entrance of Garey Park and another where the water pipeline trail crosses. Developer trails are also proposed when residents areas are built in the area, and it is proposed that the developer trails have at least one other crossing over RR 2243.

