

# Chapter 3

## Georgetown's Existing Park Inventory

*“Let us leave a splendid legacy for our children. Let us turn to them and say, this you inherit: guard it well, for it is far more precious than money, and once destroyed, nature’s beauty cannot be repurchased at any price.”*

ANSEL ADAMS, US Photographer

## Purpose of the Existing Parks and Recreation Inventory

The Excellent Park System notes that knowing what parks are in the system is one of the seven traits of an outstanding park system. Having an up to date inventory is a key part of the park planning process; it helps to understand what park and open space facilities are currently available and to assess the condition of those facilities. It also helps to assess whether or not those facilities are addressing the actual park and open space needs of the city. By comparing the available park facilities with the number of people that the parks system serves, the need for new or improved recreational facilities can be determined.

Georgetown has an established network of both neighborhood and larger community park facilities. These parks are well placed within the neighborhoods they serve and are extremely well maintained. With the help of the city's parkland dedication ordinance, even the newly developed parts of the city have ample parkland.

This inventory begins to identify where park service is lacking.

## Components of the Existing Park Inventory

This inventory of existing parks reviews several aspects of each park in the Georgetown park system. These include:

- **Classification:** What is the purpose of a given park? Is it intended to serve a local neighborhood around it, giving children and young adults a place to play? Is it intended to serve a much larger population, providing fields for organized league play? This determines whether a park should be classified as a neighborhood park, a community park, a special purpose park, or a linkage park. Key issues that are looked at include:
- **Location:** Where is the park located in relation to the population that it serves? Is it accessible?
- **Service Area:** What are the limits of the area served by each park? Are there any major thoroughfares or physical features that create barriers to accessing the park?
- **Size of the Park:** How big is the park? Is it large enough to adequately accomplish its intended purpose?
- **Facilities in each Park:** What does the park contain? Are the facilities appropriate for the type of park?
- **Layout:** Is the arrangement of facilities in each park appropriate?
- **Condition of the Park:** What is the general condition of the facilities in each park?
- **Special Considerations:** Does the park provide facilities for the physically challenged that meet the requirements of the Americans with Disabilities Act?

## Park Classification

Long accepted guidelines identify three general categories of parks, which are:

**Local Close-to-Home Parks** - these parks are located within the community served by the facility, and includes mini-parks, neighborhood parks, and community parks.

These parks are a very important part of any park system, and thus far Georgetown has done an excellent job in providing these types of parks. Close to home parks are usually within walking or driving distance from where residents of the city live and provide day to day facilities for all ages and activities. Close-to-home park types in Georgetown are:

- Neighborhood parks, including mini-parks
- Community parks (also referred to as District Parks)
- Special use parks
- Linear parks

**Regional Parks** - located within 30 minutes to two hours of driving distance. Parks in this category serve a number of communities, and can include regional metropolitan parks and regional park reserves.

**Unique Parks** - These parks can be defined as areas that are unique in some way, whether because of physical features or because of the types of facilities provided. Parks in this category may include linear parks, special use parks, or land conservancies. They may be either local or regional in nature.

*“Georgetown must balance growth with preservation.”*

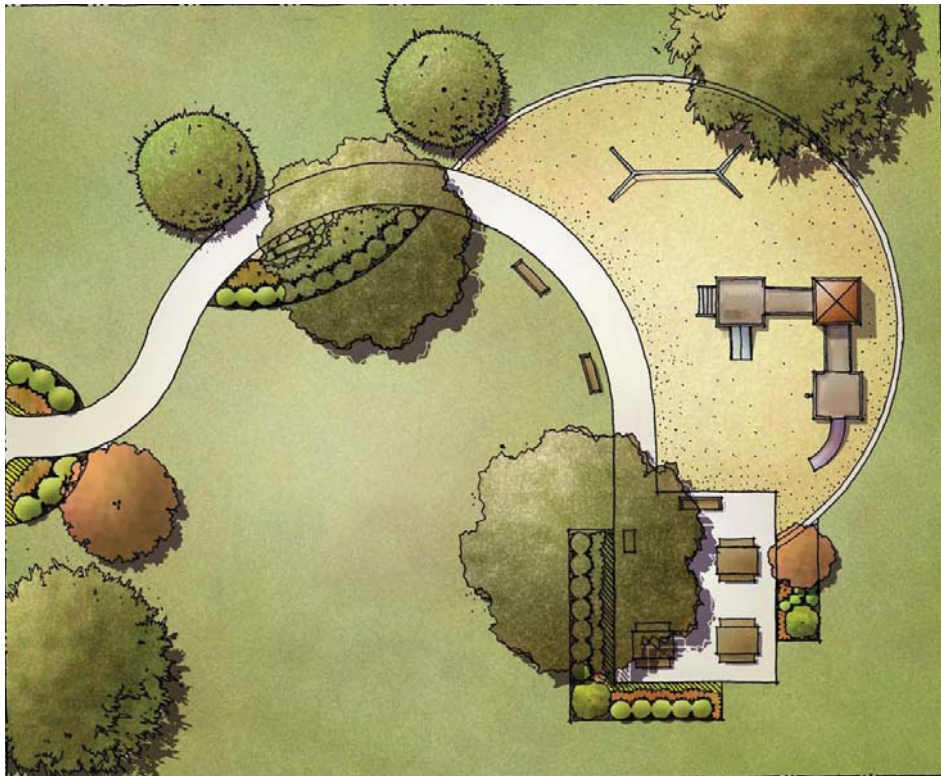
Georgetown Resident, 2008



### Description of Park Types Found in Georgetown Today

**Pocket Parks** - this type of park is usually less than one acre in size. Pocket parks are access by walking or bicycling; because of their small size parking is not available so therefore vehicle access is not probable. Amenities in pocket parks include benches, fountains, landscaping, and other focal features. Size is not the key factor of the typical pocket park, but rather the quality of the landscaping and features that go into the park. Small green areas in a downtown area are examples of pocket parks.

Because of the higher per acre cost to maintain a pocket park, many cities have adopted policies that ruled out pocket parks as a choice for future parks. Conversely, having easy accessibility to parks all over the city creates an enormous benefit to the residents.



Typical Pocket Park. This park is about 1/2 acre in size and offers amenities such as benches, landscaping and possibly a playground.

**Neighborhood Parks** - Because neighborhood parks are within easy walking or bicycling distance, they often form the foundation of recreation in most cities like Georgetown. Neighborhood parks provide amenities for an entire family and typically serve one large or several small neighborhoods. Ideally, neighborhood parks in Georgetown should range from 3 acres to 10 acres in size.

- Neighborhood parks should be accessible within a quarter mile to a half mile radius of residents.
- It is cost effective to have neighborhood parks located next to elementary schools because the city and the school district can share acquisition and development costs. In the future, where feasible, new neighborhood parks should be planned and developed in close coordination with the Georgetown Independent School District. This can result in significant cost savings and more efficient use of tax dollars to the city and the school district.
- Neighborhood parks should be accessible without having to cross major arterial streets. They are generally located away from major arterial streets and provide easy access for the users that surround it.

**Size** - Because of the physical topography, neighborhood park sites can vary in size. An ideal size for neighborhood parks in Georgetown should be around three to ten acres.

**Location** - An ideal location for neighborhood parks is to be in the center of the neighborhoods it is meant to serve. Also having local or minor collector streets on at least two sides of the park allows for easy pedestrian and bicycle accessibility.

#### Typical Neighborhood Park Facilities:

- Age appropriate playground equipment with adequate safety surfacing around the playground
- Unlighted practice fields for baseball, softball, soccer, and football
- Unlighted tennis courts
- Lighted or unlighted multi-purpose courts for basketball and volleyball
- Active areas for unorganized play
- Picnic areas with benches, picnic tables and cooking grills
- Shaded pavilions and gazebos
- Jogging and exercise trails

**Restrooms** - restrooms typically are not placed in neighborhood parks because they increase maintenance and provide a location for illegal activities.

**Parking** – parking varies based on the size of the park, the availability of safe on street parking, the facilities the park offers and the number of users the park will attract. A minimum of eight spaces per new neighborhood park are recommended with an additional two handicapped parking spaces per each neighborhood park.

An illustration representing typical amenities found in a neighborhood is shown on the following page; however each neighborhood park should be uniquely designed to complement the neighborhood that it serves.



Kelley Park, Summercrest Park, and Chautauqua Park are just some of the typical neighborhood parks in Georgetown.





Example of a typical neighborhood park layout. This park is approximately 6 acres in size, and is surrounded by streets on all sides of the park. It is centered in the neighborhood that it serves.

**Community Parks** - these larger parks are meant to serve a group of neighborhoods or a portion of a city. Community parks are usually reached by automobiles, as well as pedestrian and bicycle access of residents who live near the park.

**Size** - Community parks vary in size from 10 acres to 50+ acres. The typical community park should be large enough so it can provide a variety of facilities while still leaving open space for unstructured recreation and natural areas. The park should also have room for expansion, as new facilities are required to continue to attract users.

**Location** - Because of the potential for noise and bright lights at night, community parks should be buffered from adjacent residential areas. Since community parks are usually reached by automobiles, it is best to locate a community park near a major thoroughfare to provide easy access from different parts of the city.

**Typical Community Park Facilities:**

- Play equipment
- Active free play areas
- Picnic areas and pavilion(s)
- Restrooms
- Jogging, bicycle or nature trails, sometimes lighted for evening use
- Lighted ball fields, suitable for organized competitive events
- Recreation center (if appropriate)
- Sufficient off-street parking based on facilities provided and size of park
- Security lighting
- Other facilities as needed which can take advantage of the unique characteristics of the site, such as nature trails, fishing ponds, swimming pools, amphitheaters etc.

**Parking** - This varies based on the facilities provided and the size of park. Additional parking is needed to accommodate facilities such as athletic fields or swimming pools that can be located in community parks. The National Recreation and Parks Association (NRPA) recommends a minimum of five spaces per acre with additional parking for added facilities. The specific amount of parking provided in each park should be determined by the facilities provided in that park.

The illustration on the following page is an example of a typical community park.

**“In the end, we conserve only what we love. We will love only what we understand. We will understand only what we are taught.”**

Baba Dioum, Senegalese poet





*“A thing is right only when it tends to preserve the integrity, stability, and beauty of the community; and the community includes the soil, water, fauna and flora, as well as the people.”*

Aldo Leopold, *A Sand County Almanac*, 1949

Chandler Park, Rivery Park and Trail, and Geneva Park are examples of community parks in Georgetown.



A typical community park layout, illustrating the types of facilities that might occur in a 20 to 30 acre community park.



**Regional Parks** - Regional parks are very large parks that serve an entire region of the city, and very often become the premier park in that area. For example Zilker Park is one of the largest and most loved parks in Austin, and encompasses everything from passive trails and open space to high use athletic facilities.

Georgetown currently has three parks that are considered regional parks. San Gabriel Park is the most well known of the regional parks in Georgetown and many of the visitors come to San Gabriel Park from the surrounding county area. The undeveloped Garey Park is also a regional park, and once developed it will have many unique features and amenities such as equestrian trails and an observatory.

**Location** - Regional parks should be located near major highways and thoroughfares to provide easy access from most of the city. Because of the potential for traffic, noise, and bright lights at night, regional parks should ideally be buffered from adjacent residential areas.

Facilities that are typically included in a regional park are as follows:



*San Gabriel Park is the most well known and largest developed regional park in Georgetown.*

### Typical Regional Park Facilities

Facilities generally located in regional parks may include:

- Large lake or pond for water based activities
- Recreation centers
- Indoor or outdoor pools
- Large natural habitat for wildlife and bird observation
- Multi-use trail system
- Nature or interpretive center
- Large picnic shelter with grills and tables
- Several individual picnic shelters
- Large shaded playground
- Restrooms
- Large open space areas
- Sports facilities
- Parking areas for each of the facilities listed above

Suggested potential additions to a regional park may include:

- Citywide gathering and performance areas.
- Small or large performance amphitheaters
- Athletic facilities, as long as they do not dominate the park
- Limited day camping facilities
- Sufficient off-street parking based on facilities provided and size of park
- Other facilities as needed which can take advantage of the unique characteristics of the site, such as nature trails or fishing ponds, swimming pools, amphitheaters, skate parks, etc.

**Open Space Preserves and Natural Area Parks** - open space preserves are a critical part of the land use system in any large metropolitan area. The CORP of Engineers Lake located within the city limits of Georgetown is a great provider of open space preserve. As with any CORP lake, Lake Georgetown is intended for flood control. The lake and the land surrounding it is meant to remain in natural state so that its purpose can be fulfilled. Very little development around the lake has been done. There is a trail that encompasses the entire lake, and there are a few park sites towards the south end of the lake. However, even the amenities provided at the park sites are limited in their development. Very few communities have a lake within their city, and even fewer have one that is to remain in a more natural state. Georgetown is fortunate to have such a great asset of open space preserved within the city.

***“It is not enough to understand the natural world; the point is to defend and preserve it.”***

Edward Abbey



**Linear Parks** - are open park areas that generally follow some natural or man-made feature that is linear in nature, such as creeks, abandoned railroad rights-of-way, or power line or utility corridor easements. In Georgetown, most of the linear park corridors are along the river and creek system. Properly developed to facilitate pedestrian and bicycle travel, these parks can serve to link or connect other parks in the local system, as well as schools, neighborhood shopping, libraries, and other major destinations. No specific standards apply to linear/linkage parks other than the park should be large enough to adequately accommodate the resources they contain. They should also serve to help preserve open space.

**Special Purpose Parks** - are designed to accommodate specialized recreational activities. Because the facility needs for each activity type are different, each special purpose park usually provides for one or a few activities. Examples of special purpose parks include:

- Golf courses
- Athletic fields or complexes
- Nature centers or large natural preserves
- Swimming pool centers
- Tennis complexes

Athletic complexes and golf courses are the most common types of special purpose parks. Athletic complexes seek to provide fields for organized play in a location that can accommodate the traffic and noise that a large number of users can generate. Athletic complexes should include sufficient fields so that leagues can congregate at one facility and not have to spread out in different locations.



The Georgetown Tennis Center is an example of a special purpose facility in Georgetown.



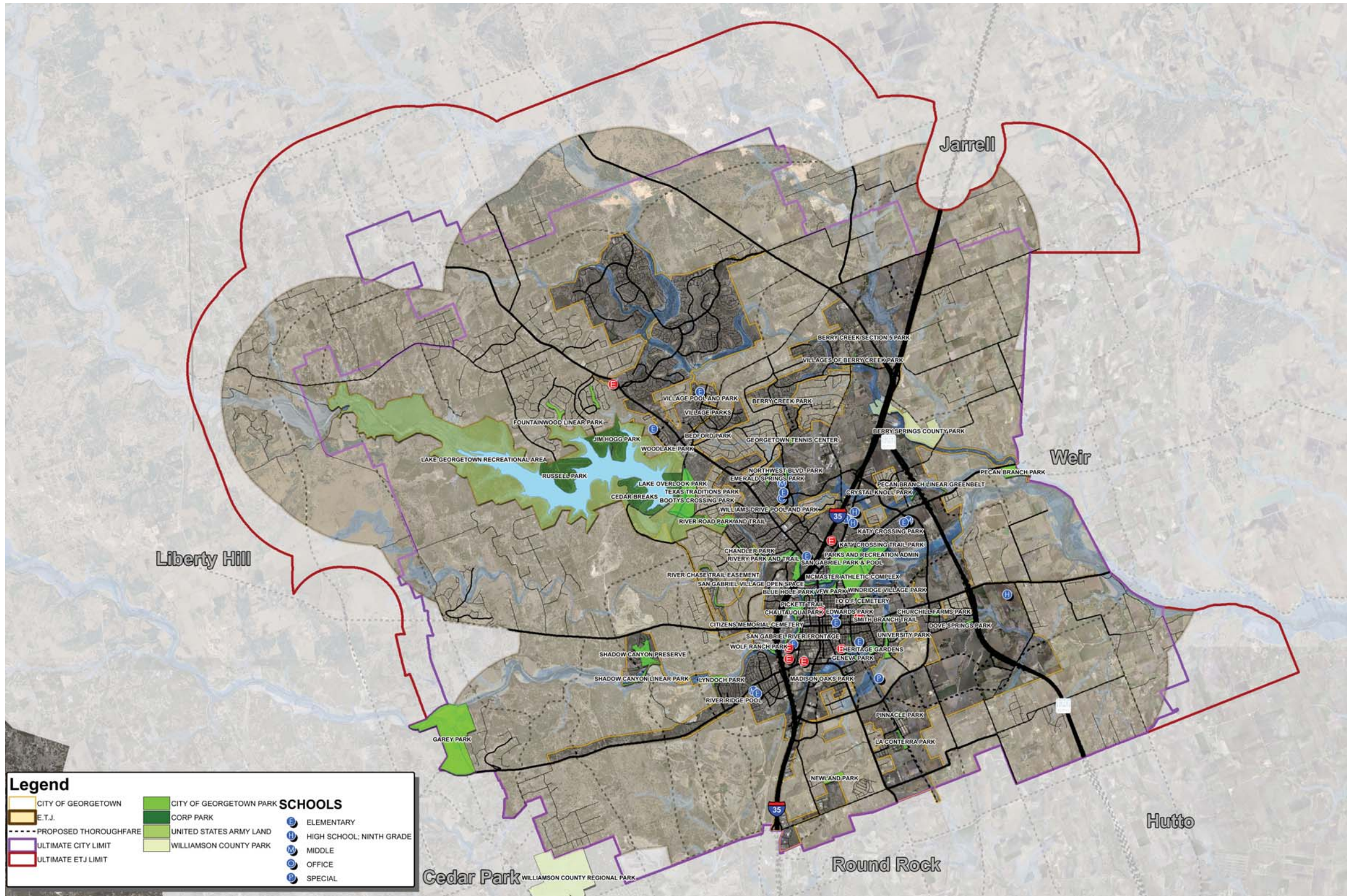
**The Size of the Park System in Georgetown**

Currently the Georgetown Park System includes 55 park sites and contains a total of 1,360.21 acres. Table 3-1 below summarizes the existing park facilities. The tables on the following pages gives a description of the different types of parks in Georgetown.

Table 3-1 The 2008 Parks System in Georgetown	
<b>Total Number of Parks</b>	<b>55</b>
Total Acreage	1,360.21 acres city-owned
Neighborhood Parks	29 Parks totaling 129.84 acres
Community Parks	10 Parks totaling 246.65 acres
Linear Parks and Trails	9 Parks totaling 172.54 acres
Regional Parks	3 Parks totaling 738.95 acres
Special Purpose - Sports Complex	2 Parks totaling 53.42 acres
Open Space	2 Parks totaling 18.81 acres
Largest Developed Park	San Gabriel Park, 177.95 acres
Smallest Developed Park	Founders Park, 0.09 acres
Developed vs. Undeveloped Acreage	472.84 acres vs. 887.37 acres*
<i>*Note that 525 undeveloped acres is Garey Park</i>	

Also within the city limits of Georgetown there is an U.S. Army Corps of Engineers lake, Lake Georgetown, with four park sites and additional open space that surround it. There is also a county park, Berry Springs Park and Preserve, within Georgetown. Finally there are four private parks in Georgetown; the Shadow Canyon Preserve, Texas Traditions Park, the Georgetown Soccer Association Sports Complex, and the Village Pocket Parks. These nine park sites and open space contribute an additional 3,463.32 acres of open space to the residents of Georgetown that is not city owned. 2,446.85 acres of that additional parkland is undeveloped Army Corps of Engineers designated open space surrounding Lake Georgetown.

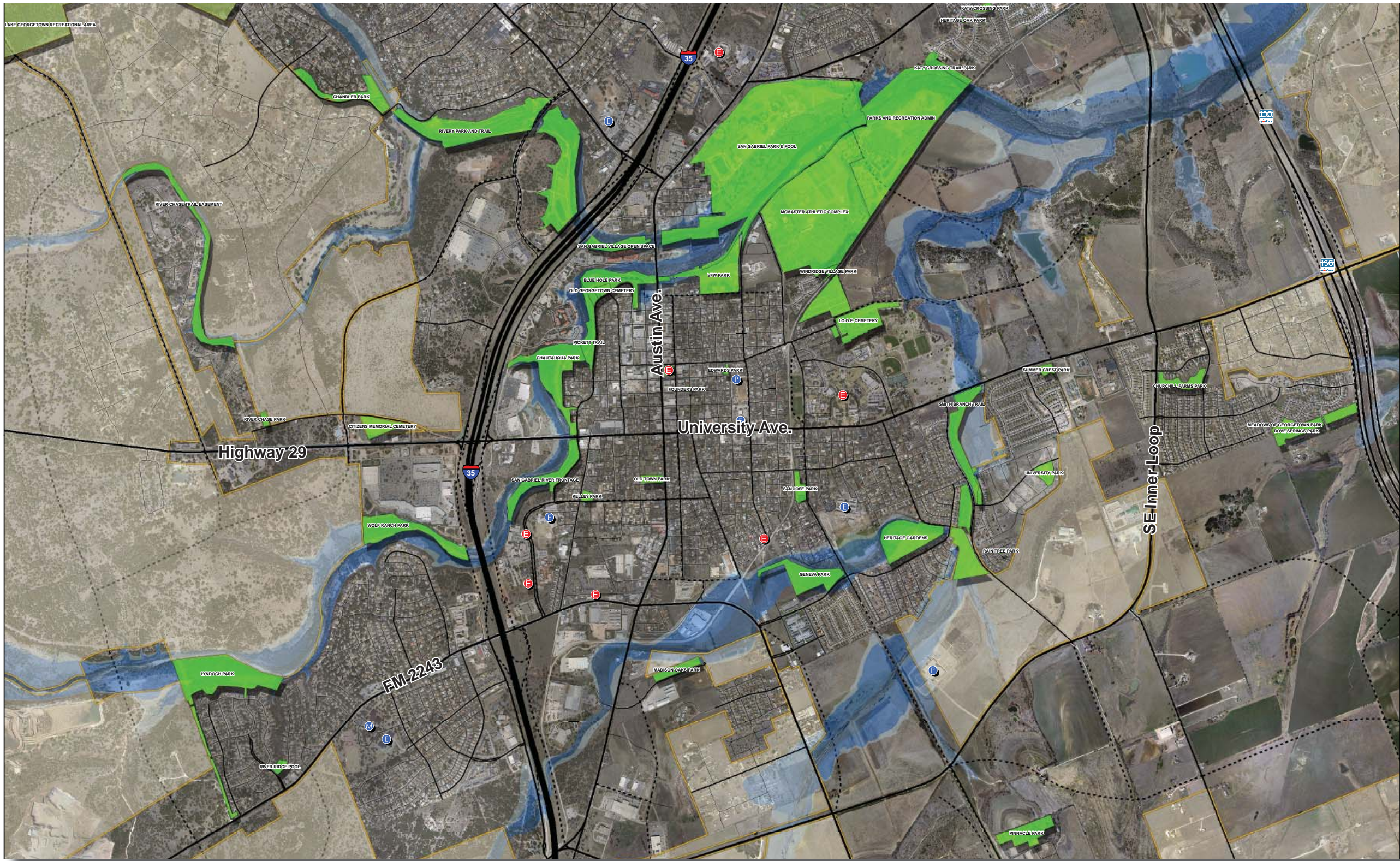




Location of Existing Parks in Georgetown.







Location of Existing Parks in Georgetown.



**Table 3-2 Neighborhood Parks and Recreation Facilities**

Park	Overall Acreage		Address	Sector	Hike and Bike Trail	Backstop	Basketball Court	Playscape	Swings	Soccerfield	Softball Fields	Baseball Field	Tennis Court	Volleyball Court	Skatepark	Horseshoes	Exercise Station	Disc Golf Course	Swimming Pool	BBQ Grill	Large Pavilion	Medium Pavilion	Small Pavilion	Benches	Picnic Table	Bike Rack	Drinking Fountain	Parking	Restroom Building											
	Und	Dev																																						
<b>Georgetown Neighborhood Parks (City Owned)</b>																																								
Bedford		2.29	Madrid Dr. at W. Sequoia SPUR	NW	X			1	1																															
Berry Creek		2.67	1100 Shinnecock Hills Dr.	NW			1	2	1																															
Berry Creek Section 5	1.01		SH 195	NW																																				
Crystal Knoll	1.95		C.R. 151 at NE Inner Loop	NE																																				
Dove Springs	10.58		Rock Dove Ln at Covey Ln	SE																																				
Edwards	0.49		704 Ash Street	NE				2						1																										
Emerald Springs	12.00		3604 Old Mill Rd.	NW	X	1		1																																
Founders	0.09		S. Church St at E. 9th St.	NE																																				
Geneva	14.13		1021 Quail Valley	SE				1																																
Heritage Oak	0.27		River Park Ln.	NE																																				
Katy Crossing	1.12		224 Katy Crossing	NE				1	2																															
Kelley	1.22		805 W. 17th	SE			1	1																																
Madison Oaks Park	4.25		Madison Oaks Ave.	SE																																				
Meadows of Georgetown	2.12		321 Meadows Dr.	SE	X	2		1	1																															
Northwest Blvd. Park	6.29		Northwest Blvd. at Hedgewood Dr.	NW																																				
Old Town	1.97		1260 S. Austin Ave.	SE				1						1																										
Pinnacle	10.15		Green Slope Ln. at Avalanche Ave.	SE			1	1																																
Raintree	0.20		302 Raintree Dr.	SE				1																																
River Chase	1.05		C.R. 265 at River Chase Blvd.	SW																																				
River Ridge	1.38		S. Ridge Cir at River Ridge Ln.	SW				1																																
San Jose	2.13		1707 San Jose	SE		1	1	1	1											1																				
Summer Crest	1.59		1201 Ashberry Tr.	SE				1																																
Summer Green	1.33		Greenside Ln. at Summers Green	NW																																				
University Park	1.26	3.63	2510 University Park Dr.	SE	X			1	2																															
Village Pool and Park	4.99		370 Village Commons Blvd.	NW	X			2																																
Villages of Berry Creek	35.16		Airport Rd. at Briarcrest Dr.	NW																																				
Williams Drive Pool and Park	2.03		3201 Williams Dr.	NW			2																																	
Windridge Village	1.35		1302 E. 3rd St.	NE																																				
Woodlake	1.12		249 Wildwood	SW	X			1	2																															
<b>Total</b>	<b>62.03</b>	<b>67.81</b>				<b>4</b>	<b>6</b>	<b>21</b>	<b>10</b>	<b>0</b>	<b>0</b>	<b>0</b>	<b>0</b>	<b>2</b>	<b>0</b>	<b>0</b>	<b>0</b>	<b>0</b>	<b>1</b>	<b>3</b>	<b>17</b>	<b>2</b>	<b>5</b>	<b>3</b>	<b>61</b>	<b>47</b>	<b>4</b>	<b>3</b>							<b>5</b>					
<b>Neighborhood Parks (Privately Owned)</b>																																								
Texas Traditions Park		0.43	Sabine Dr. at Turtle Bend	SW																																				
Village Parks				NW																																				
Adkins	0.33		Shell Rd. at Village Commons Blvd.	NW																																				
Fairfield	0.53		Fairfield Ct. at Westbury Ln.	NW																																				
Green Grove	0.69		Green Grove at Westbury Ln.	NW																																				
Hanover	0.28		Hanover Ct. at Village Commons Blvd.	NW																																				
Shell	0.21		Westbury Ln.	NW																																				
Spring	0.35		Spring Ct. at Westbury Ln.	NW																																				
Village Glen	0.29		Village Glen at Westbury Ln.	NW																																				
Westbury	0.40		Westbury Ln.	NW																																				
<b>Total</b>	<b>0.00</b>	<b>3.52</b>				<b>0</b>	<b>0</b>	<b>0</b>	<b>0</b>	<b>0</b>	<b>0</b>	<b>0</b>	<b>0</b>	<b>0</b>	<b>0</b>	<b>0</b>	<b>0</b>	<b>0</b>	<b>0</b>	<b>0</b>	<b>0</b>	<b>0</b>	<b>0</b>	<b>0</b>	<b>0</b>	<b>0</b>	<b>0</b>	<b>0</b>	<b>0</b>	<b>0</b>	<b>0</b>	<b>0</b>	<b>0</b>	<b>0</b>	<b>0</b>	<b>0</b>	<b>0</b>	<b>0</b>		



**Table 3-3 Community Parks and Recreation Facilities**

Park	Overall Acreage		Address	Sector	Active Recreation														Swimming Pool	Passive Recreation								Infrastructure			
	Und	Dev			Hike and Bike Trail	Backstop	Basketball Court	Playscape	Swings	Soccerfield	Softball Fields	Baseball Field	Tennis Court	Volleyball Court	Skatepark	Horseshoes	Exercise Station	Disc Golf Course		BBQ Grill	Large Pavilion	Medium Pavilion	Small Pavilion	Benches	Picnic Table	Bike Rack	Drinking Fountain	Parking	Restroom Building		
<b>Georgetown Community Parks (City Owned)</b>					<b>Active Recreation</b>														<b>Aquatic</b>	<b>Passive Recreation</b>								<b>Infrastructure</b>			
Blue Hole		13.98	100 Blue Hole Park	NE	X																					X	1				
Chandler		11.45	108 Spring Valley Rd.	SW	X																					X	1				
Chautauqua		23.16	602 Rucker	NE			1	2	1																						
Heritage Gardens and Park	18.97		2100 Hutto Rd.	SE	X																										
Newland	26.82		Clearview Dr.	SE																											
Pecan Branch	45.54		FM 971	NE																											
River Road Park and Trail		7.00	Skinner Ln.	SW	X																										
Rivery Park and Trail		63.00	1448 Rivery Blvd.	SW	X			1																							
VFW Park		19.07	110 N. College	NE	X		1	1	1	1	3																				
Wolf Ranch	17.68		San Gabriel Overlook	SW																											
<b>Total</b>	<b>108.99</b>	<b>137.66</b>				<b>0</b>	<b>2</b>	<b>4</b>	<b>2</b>	<b>1</b>	<b>3</b>	<b>0</b>	<b>0</b>	<b>0</b>	<b>0</b>	<b>0</b>	<b>0</b>	<b>0</b>	<b>0</b>	<b>1</b>	<b>1</b>	<b>0</b>	<b>9</b>	<b>1</b>	<b>2</b>	<b>2</b>	<b>21</b>	<b>16</b>	<b>3</b>	<b>9</b>	<b>4</b>

**Table 3-4 Linear Parks and Recreation Facilities**

Park	Overall Acreage		Address	Sector	Active Recreation														Swimming Pool	Passive Recreation								Infrastructure	
	Und	Dev			Hike and Bike Trail	Backstop	Basketball Court	Playscape	Swings	Soccerfield	Softball Fields	Baseball Field	Tennis Court	Volleyball Court	Skatepark	Horseshoes	Exercise Station	Disc Golf Course		BBQ Grill	Large Pavilion	Medium Pavilion	Small Pavilion	Benches	Picnic Table	Bike Rack	Drinking Fountain	Parking	Restroom Building
<b>Georgetown Linear Parks and Trails (City Owned)</b>					<b>Active Recreation</b>														<b>Aquatic</b>	<b>Passive Recreation</b>								<b>Infrastructure</b>	
Churchill Farms Greenbelt	5.86		Reinhardt Blvd.	SE	X																								
Fountainwood Linear Park	43.46		Goldridge Dr. at Silverstone Dr.	SW																									
Katy Crossing Trail Park	4.24		River Park Rd. at River Bluff Cir.	NE	X																								
Lyndoch Park	36.19		River Down Rd.	SW	X																								
Pecan Branch Linear Greenbelt	11.79		FM 971 at ETJ Limits	NE																									
Pickett Trail	7.34		Scenic Dr.	NE	X																								
River Chase Trail Easement	17.09		River Chase Blvd.	SW	X																								
Shadow Canyon Linear Park	17.04		Pickett Trail at Weir Ranch Rd.	SW	X																								
Smith Branch Trail	29.52		Southwestern Blvd.	SE	X																								
<b>Total</b>	<b>172.54</b>	<b>0.00</b>				<b>0</b>	<b>0</b>	<b>0</b>	<b>0</b>	<b>0</b>	<b>0</b>	<b>0</b>	<b>0</b>	<b>0</b>	<b>0</b>	<b>0</b>	<b>0</b>	<b>0</b>	<b>0</b>	<b>0</b>	<b>0</b>	<b>0</b>	<b>0</b>	<b>0</b>	<b>0</b>	<b>0</b>	<b>0</b>	<b>0</b>	<b>0</b>



**Table 3-5 Regional Parks and Recreation Facilities**

Park	Overall Acreage		Address	Sector	Hike and Bike Trail	Backstop	Basketball Court	Playscape	Swings	Soccerfield	Softball Fields	Baseball Field	Tennis Court	Volleyball Court	Skatepark	Horseshoes	Exercise Station	Disc Golf Course	Swimming Pool	BBQ Grill	Large Pavilion	Medium Pavilion	Small Pavilion	Benches	Picnic Table	Bike Rack	Drinking Fountain	Parking	Restroom Building									
	Und	Dev																																				
<b>Georgetown Regional Parks (City Owned)</b>																																						
<b>Active Recreation</b>																																						
Booty's Road Park*		36.00	Goodwater Trail at Cedar Breaks Rd.	SW	X																																	
Garey	525.00		RM 2243	SW																																		
San Gabriel Park		177.95	445 E. Morrow	NE	X		1	5	2	6		11		2	1			9	1																			
<b>Total</b>	<b>525.00</b>	<b>213.95</b>				<b>0</b>	<b>1</b>	<b>5</b>	<b>2</b>	<b>6</b>	<b>0</b>	<b>11</b>	<b>0</b>	<b>2</b>	<b>1</b>	<b>0</b>	<b>9</b>	<b>1</b>	<b>1</b>																			
<b>US Army CORPS of Engineers Recreational Parks</b>																																						
<b>Active Recreation</b>																																						
Cedar Breaks		191.48	D.B. Wood Rd. at Booty's Crossing Rd.	SW	X																																	
Jim Hogg		222.72	Jim Hogg Rd.	SW	X																																	
Lake Overlook		92.84	Goodwater Trail at Lake Overlook Rd.	SW	X																																	
Russell		231.20	C.R. 262	SW	X																																	
<b>Total</b>	<b>0.00</b>	<b>738.24</b>				<b>0</b>	<b>0</b>	<b>0</b>	<b>0</b>	<b>0</b>	<b>0</b>	<b>0</b>	<b>0</b>	<b>0</b>	<b>0</b>	<b>0</b>	<b>0</b>	<b>0</b>	<b>0</b>	<b>0</b>																		
<b>Williamson County Regional Parks</b>																																						
<b>Active Recreation</b>																																						
Berry Springs		256.38	C.R. 152	NE																																		
<b>Total</b>	<b>0.00</b>	<b>256.38</b>				<b>0</b>	<b>0</b>	<b>0</b>	<b>0</b>	<b>0</b>	<b>0</b>	<b>0</b>	<b>0</b>	<b>0</b>	<b>0</b>	<b>0</b>	<b>0</b>	<b>0</b>	<b>0</b>	<b>0</b>	<b>0</b>																	

\* The 36 acres for Booty's Road Park is leased from the US Army Corps of Engineers.

**Table 3-6 Special Purpose - Sports Complex**

Park	Overall Acreage		Address	Sector	Hike and Bike Trail	Backstop	Basketball Court	Playscape	Swings	Soccerfield	Softball Fields	Baseball Field	Tennis Court	Volleyball Court	Skatepark	Horseshoes	Exercise Station	Disc Golf Course	Swimming Pool	BBQ Grill	Large Pavilion	Medium Pavilion	Small Pavilion	Benches	Picnic Table	Bike Rack	Drinking Fountain	Parking	Restroom Building								
	Und	Dev																																			
<b>Georgetown Sports Complex (City Owned)</b>																																					
<b>Active Recreation</b>																																					
McMaster Athletic Complex		46.16	101 W.L. Walden Drive	NE			1	1		3	4			4		1									19	1											
Georgetown Tennis Center		7.26	400 Serenada	NW				1					11							1				6		1											
<b>Total</b>	<b>0.00</b>	<b>53.42</b>			<b>0</b>	<b>1</b>	<b>2</b>	<b>0</b>	<b>3</b>	<b>4</b>	<b>0</b>	<b>11</b>	<b>4</b>	<b>0</b>	<b>1</b>	<b>0</b>	<b>0</b>	<b>0</b>	<b>1</b>	<b>3</b>	<b>2</b>	<b>2</b>	<b>0</b>	<b>25</b>	<b>1</b>	<b>1</b>	<b>2</b>										
<b>Georgetown Sports Complex (Privately Owned)</b>																																					
<b>Active Recreation</b>																																					
Georgetown Soccer Complex		17.00								14																											
<b>Total</b>	<b>0.00</b>	<b>17.00</b>			<b>0</b>	<b>0</b>	<b>0</b>	<b>0</b>	<b>14</b>	<b>0</b>	<b>0</b>	<b>0</b>	<b>0</b>	<b>0</b>	<b>0</b>	<b>0</b>	<b>0</b>	<b>0</b>	<b>0</b>	<b>0</b>	<b>0</b>	<b>0</b>	<b>0</b>	<b>0</b>	<b>0</b>	<b>0</b>	<b>0</b>	<b>0</b>	<b>0</b>	<b>0</b>	<b>0</b>	<b>0</b>	<b>0</b>	<b>0</b>	<b>0</b>	<b>0</b>	<b>0</b>



**Table 3-7 Open Space Parks and Recreation Facilities**

Park	Overall Acreage		Address	Sector	Hike and Bike Trail	Backstop	Basketball Court	Playscape	Swings	Soccerfield	Softball Fields	Baseball Field	Tennis Court	Volleyball Court	Skatepark	Horseshoes	Exercise Station	Disc Golf Course	Swimming Pool	BBQ Grill	Large Pavilion	Medium Pavilion	Small Pavilion	Benches	Picnic Table	Bike Rack	Drinking Fountain	Parking	Restroom Building		
	Und	Dev			Active Recreation	Aquatic	Passive Recreation	Infrastructure																							
<b>Georgetown Open Space (City Owned)</b>					<b>Active Recreation</b>														<b>Aquatic</b>	<b>Passive Recreation</b>							<b>Infrastructure</b>				
San Gabriel River Frontage	12.33		Scenic Dr. at W. 15th St.	SE	X																										
San Gabriel Village Open Space	6.48		I-35 at San Gabriel Village Blvd.	NE	X																				4				1		
<b>Total</b>	<b>18.81</b>	<b>0.00</b>				0	0	0	0	0	0	0	0	0	0	0	0	0	0	0	0	0	0	0	4	0	0	1		0	
<b>US Army CORP of Engineers Open Space</b>					<b>Active Recreation</b>														<b>Aquatic</b>	<b>Passive Recreation</b>							<b>Infrastructure</b>				
Open Space Around Lake Georgetown	2378.75		D.B. Wood Rd. at Cedar Breaks Rd.																												
<b>Total</b>	<b>2378.75</b>	<b>0.00</b>				0	0	0	0	0	0	0	0	0	0	0	0	0	0	0	0	0	0	0	0	0	0	0		0	
<b>Open Space (Privately Owned)</b>					<b>Active Recreation</b>														<b>Aquatic</b>	<b>Passive Recreation</b>							<b>Infrastructure</b>				
Shadow Canyon Preserve	68.10		Shadow Canyon Dr. at Malabar Dr.	SW																											
<b>Total</b>	<b>68.10</b>	<b>0.00</b>				0	0	0	0	0	0	0	0	0	0	0	0	0	0	0	0	0	0	0	0	0	0	0		0	



**Existing Park Reviews**

A review of each of the existing parks in Georgetown is shown on this page and on the following pages. The reviews include a summary of the facilities in each park, as well as observations regarding the arrangement and condition of facilities. Key potential improvements to each park are discussed in this section.

**Bedford Park**

Type of Park: Neighborhood Park  
 Ownership: City of Georgetown  
 Address: Madrid Dr. at West Sequoia SPUR  
 Planning Area: Northwest Sector  
 Size of Park: 2.29 acres Developed

**Existing Facilities**

- Hike and Bike Trail
- 1 Playscape
- 2 Swings
- 5 Benches

**Assessment of Existing Park Facilities:**

The benches are in good condition. The playscape and swings are in excellent condition.



*“Reading about nature is fine, but if a person walks in the woods and listens carefully, he can learn more than what is in books.”*

George Washington Carver



### Berry Creek Park

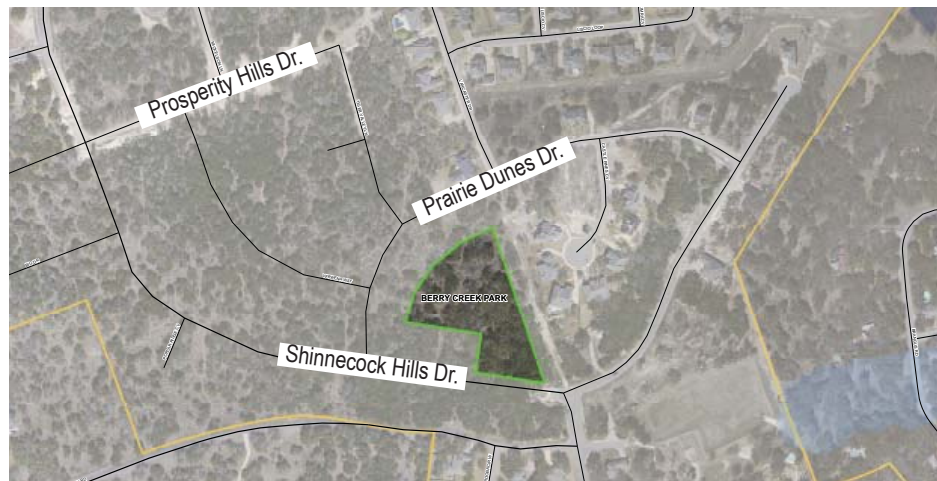
Type of Park: Neighborhood Park  
 Ownership: City of Georgetown  
 Address: 1101 Shinnecock Hills Dr.  
 Planning Area: Northwest Sector  
 Size of Park: 2.67 acres Developed

**Existing Facilities**

- 1 Playscape
- Swings
- 1 Basketball Court
- 4 Benches
- 4 Picnic Tables
- Restroom

**Assessment of Existing Park Facilities:**

The park facilities in this park were recently added and are all in excellent condition.



### Berry Creek Section 5 Park

Type of Park: Neighborhood Park  
 Ownership: City of Georgetown  
 Address: SH 195  
 Planning Area: Northwest Sector  
 Size of Park: 1.01 acres Undeveloped

**Existing Facilities**

- Undeveloped

**Assessment of Existing Park Facilities:**

This park is currently undeveloped and has no existing park facilities.



### Blue Hole Park

Type of Park: Community Park  
 Ownership: City of Georgetown  
 Address: 100 Blue Hole  
 Planning Area: Northeast Sector  
 Size of Park: 13.98 acres Developed



**Existing Facilities**

- Hike and Bike Trail
- 2 Picnic Tables
- Restroom Building
- Parking

**Assessment of Existing Park Facilities:**

The facilities in this park were recently renovated after being damaged in the flood during the summer of 2007. All park facilities are now in excellent condition.



### Booty's Road Park

Type of Park: Regional Park  
 Ownership: Property is leased from US Army Corps of Engineers  
 Address: Goodwater Trail at Cedar Breaks Rd.  
 Planning Area: Southwest Sector  
 Size of Park: 36.00 acres Developed

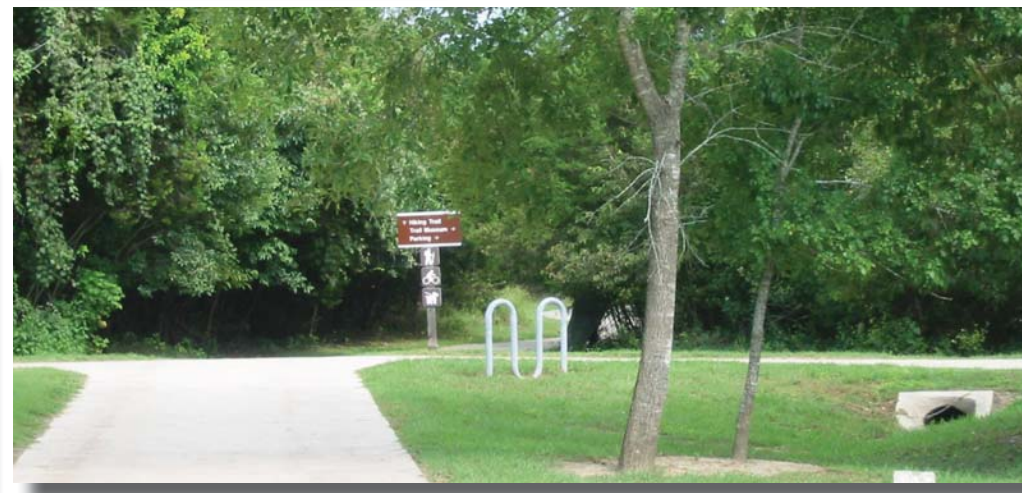
#### Existing Facilities

- Hike and Bike Trail
- 1 Large Pavilion
- Challenge Course
- Restroom Building
- Located at Lake Georgetown
- Parking



#### Assessment of Existing Park Facilities:

The pavilion and trail are in excellent condition. The Challenge Course is in good condition.



### Churchill Farms Greenbelt

Type of Park: Linear Park  
 Ownership: City of Georgetown  
 Address: Reinhardt Blvd.  
 Planning Area: Southeast Sector  
 Size of Park: 5.86 acres Undeveloped

#### Existing Facilities

- Undeveloped

#### Assessment of Existing Park Facilities:

This park is currently undeveloped and has no existing park facilities.





**Chandler Park**

Type of Park: Community Park  
 Ownership: City of Georgetown  
 Address: 108 Spring Valley Rd.  
 Planning Area: Southwest Sector  
 Size of Park: 11.45 acres Developed



**Existing Facilities**

- Hike and Bike Trail
- 3 BBQ Grills
- 4 Benches
- 3 Picnic Tables
- 1 Bike Rack
- 2 Drinking Fountains
- Misting Station
- Parking

**Assessment of Existing Park Facilities:**

Picnic tables, benches, BBQ grills, drinking fountains and the bike rack are all in excellent or good condition. The hike and bike trails is in good condition but could possibly be widened at some point in the future. Parking is acceptable at this time.



**La Conterra Blvd. Park**

Type of Park: Neighborhood Park  
 Ownership: City of Georgetown  
 Address: FM 1460 at La Conterra Blvd.  
 Planning Area: Southeast Sector  
 Size of Park: 9.14 acres Undeveloped

**Existing Facilities**

- Undeveloped

**Assessment of Existing Park Facilities:**

This park is currently undeveloped and has no existing park facilities.



### Chautauqua Park

Type of Park: Community Park  
 Ownership: City of Georgetown  
 Address: 602 Rucker  
 Planning Area: Northeast Sector  
 Size of Park: 23.16 acres Developed



#### Existing Facilities

- 1 Basketball Court
- 1 Playscape
- Swings
- 2 BBQ Grills
- 1 Medium Pavilion
- 1 Small Pavilion
- 4 Picnic Tables
- 1 Drinking Fountain
- Restroom Building
- Parking

#### Assessment of Existing Park Facilities:

The picnicking facilities range from excellent to poor condition. The poor facilities need to be replaced and the condition of the others needs to be monitored. The playscape and swings were replaced in 2008 and are now in excellent condition. The restrooms are in good condition.



### Crystal Knoll Park

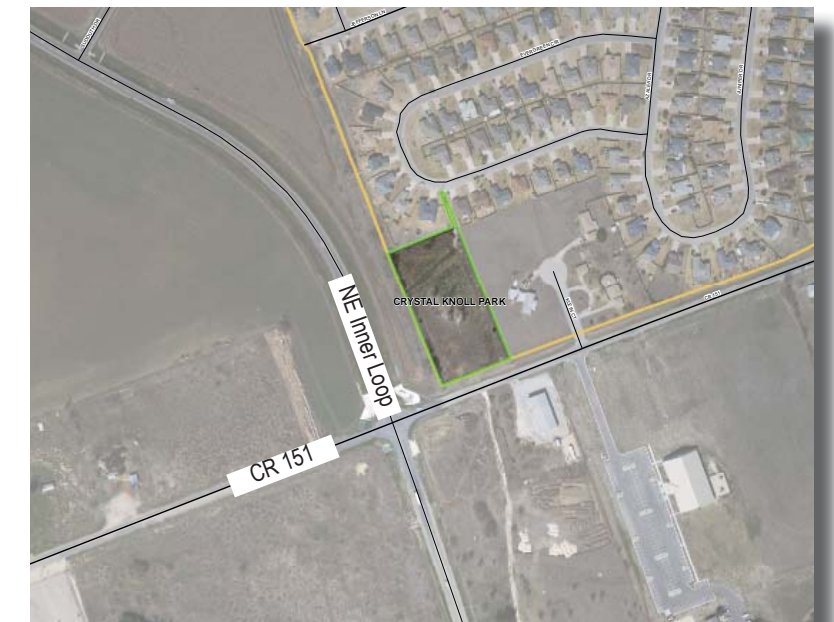
Type of Park: Neighborhood Park  
 Ownership: City of Georgetown  
 Address: CR 151 at Northeast Inner Loop  
 Planning Area: Northeast Sector  
 Size of Park: 1.95 acres Undeveloped

#### Existing Facilities

- Undeveloped

#### Assessment of Existing Park Facilities:

This park is currently undeveloped and has no existing park facilities.



### Dove Springs Park

Type of Park: Neighborhood Park  
 Ownership: City of Georgetown  
 Address: Rock Dove Ln. at Covey Ln.  
 Planning Area: Southeast Sector  
 Size of Park: 10.58 acres Undeveloped

#### Existing Facilities

- Undeveloped

#### Assessment of Existing Park Facilities:

This park is currently undeveloped and has no existing park facilities.



### Edwards Park

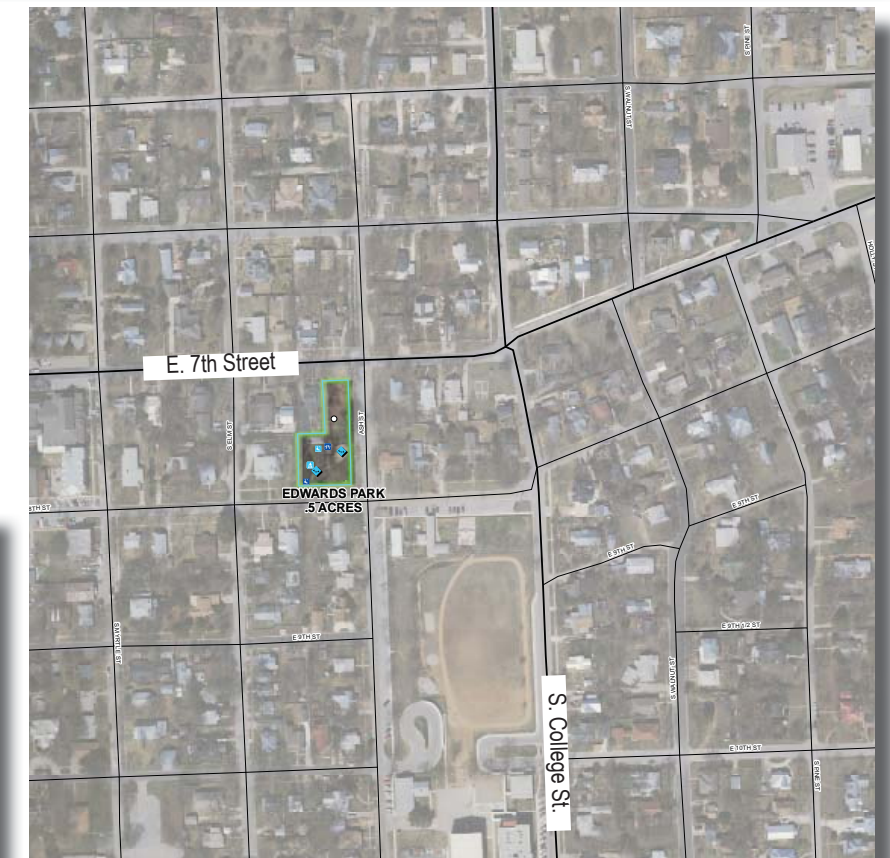
Type of Park: Neighborhood Park  
 Ownership: City of Georgetown  
 Address: 704 Ash Street  
 Planning Area: Northeast Sector  
 Size of Park: 0.49 acres Developed

#### Existing Facilities

- 2 Playscapes
- 1 Volleyball Court
- 1 BBQ Grill
- 2 Benches
- 1 Picnic Table

#### Assessment of Existing Park Facilities:

The two playscapes are in good condition. The picnicking facilities are in good condition also. The volleyball court is in acceptable condition at this time.



### Emerald Springs Park

Type of Park: Neighborhood Park  
 Ownership: City of Georgetown  
 Address: 3604 Old Mill Rd.  
 Planning Area: Northwest Sector  
 Size of Park: 12.00 acres Developed



#### Existing Facilities

- Hike and Bike Trail
- 1 Backstop
- 1 Playscape
- 2 BBQ Grills
- 2 Small Pavilions
- 5 Benches
- 3 Picnic Tables
- 1 Drinking Fountain
- Parking
- Irrigation

#### Assessment of Existing Park Facilities:

All the picnicking facilities are in good condition. The playscape is in good condition and the backstop is currently in acceptable condition. Much of this park's landscaping is in a more natural state.



### Founders Park

Type of Park: Neighborhood Park  
 Ownership: City of Georgetown  
 Address: S. Church Street at E. 9th Street  
 Planning Area: Northeast Sector  
 Size of Park: 0.09 acres Developed

#### Existing Facilities

- 2 Benches
- Monument
- Restroom Building
- Parking
- Irrigation

#### Assessment of Existing Park Facilities:

The two benches are in excellent condition.



### Fountain Wood Linear Park

Type of Park: Linear Park  
 Ownership: City of Georgetown  
 Address: Goldridge Dr. at Silverstone Dr.  
 Planning Area: Southwest Sector  
 Size of Park: 43.46 acres Undeveloped

**Existing Facilities**

- Undeveloped

**Assessment of Existing Park Facilities:**

This park is currently undeveloped and has no existing park facilities.



### Garey Park

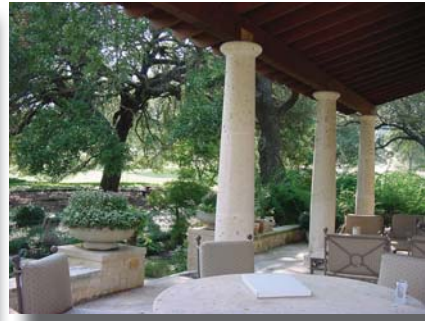
Type of Park: Regional Park  
 Ownership: City of Georgetown  
 Address: RM 2243  
 Planning Area: Southwest Sector  
 Size of Park: 525 acres Undeveloped

**Existing Facilities**

- Undeveloped
- Master Plan for Garey Park was adopted in 2006
- 2 Lakes
- Garey House
- Road with Bridge
- Cabin with 2 Bedrooms

**Assessment of Existing Park Facilities:**

This park is currently undeveloped however there is a completed and approved master plan for this park. Once built, Garey Park will be one of the most impressive parks in all of Texas.



### Geneva Park

Type of Park: Neighborhood Park  
 Ownership: City of Georgetown  
 Address: 1021 Quail Valley  
 Planning Area: Southeast Sector  
 Size of Park: 14.31 acres Developed

#### Existing Facilities

- 1 Playscape
- 1 BBQ Grill
- 1 Picnic Table
- 1 Bench

#### Assessment of Existing Park Facilities:

The playscape is in good condition. The picnic facilities are in excellent condition.



### Heritage Gardens and Park

Type of Park: Community Park  
 Ownership: City of Georgetown  
 Address: 2100 Hutto Rd.  
 Planning Area: Southeast Sector  
 Size of Park: 18.97 acres Undeveloped

#### Existing Facilities

- The current and best use of this park site is as a community garden. The community garden is currently fulfilling a recreational need in the community, and there is room for expansion of the community garden on this site if needed. The City should continue to promote and encourage the community garden. If appropriate, community gardens should be added to other park sites as the City of Georgetown grows in population in the future.

#### Assessment of Existing Park Facilities:

The facilities in the community garden are in good condition.

